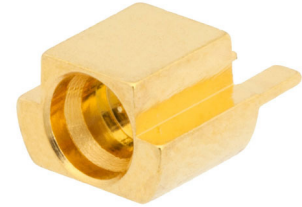


SMP Male Full Detent Connector Solder Attachment
End Launch PCB, Up To 8 GHz



RFPCB-SMP-MS-8G-207

Configuration

- Full Detent SMP Male Connector
- MIL-STD-348A
- 50 Ohms
- Straight Body Geometry
- End Launch Interface Type
- Solder Attachment

Features

- Max. Operating Frequency 8 GHz
- Excellent VSWR of 1.1:1
- Gold Plated Beryllium Copper Contact
- Contact plating according to MIL-DTL-45204
- Blind Mate Connector
- Fully compatible with industry standard SMP and GPO[®] connectors
- Full Detent, Limited Detent, and Smooth Bore Male designs
- Glass Bead Hermetic Sealed Male Shroud versions available
- DC to 8 GHz with excellent VSWR and RF Leakage performance

Applications

- General Purpose Test
- PCB Applications

Description

RFPCB-SMP-MS-8G-207 SMP Male PCB connector available from L-com has a 50 Ohm impedance. This RF connector has a End Launch connector mount interface and is designed for a wide variety of Printed-Circuit Board (PCB) applications in RF and microwave systems. This SMP Male connector uses solder as an attachment method. Our Male SMP PCB connector provides a maximum frequency of 8 GHz. The SMP connector is available in a 0.28-inch length and 0.25-inch width.

The L-com SMP Male PCB connector has a PTFE dielectric type and a VSWR of 1.1:1. This SMP PCB connector has a Beryllium Copper body with gold plating. Our RFPCB-SMP-MS-8G-207 SMP connector has a brass contact with gold plating.

This L-com SMP Male connector will ship the same day as purchased. Our SMP Male connector is part of over 40,000 RF, microwave, and millimeter wave components in stock for worldwide shipment. We also build SMP custom connector cable assemblies that will ship the same day as well.

The SMP Male connector with 50 Ohm impedance has a weight of 0.004 lbs. This Push-on RF connector has a high quality construction. The Male coaxial connector is capable of operating at temperatures ranging from -55 deg C to 155 deg C. We currently have a variety of antenna, audio/video, Ethernet, fiber optic, and USB connectors in our portfolio that are ready to ship today. For further information on similar products, our expert technical support and knowledgeable sales team can help you get the high-quality RF that meets your requirements.

Electrical Specifications

Description	Minimum	Typical	Maximum	Units
Frequency Range	DC		8	GHz
VSWR			1.1:1	

Click the following link (or enter part number in "SEARCH" on website) to obtain additional part information including price, inventory and certifications:
[SMP Male Full Detent Connector Solder Attachment End Launch PCB, Up To 8 GHz RFPCB-SMP-MS-8G-207](#)

SMP Male Full Detent Connector Solder Attachment
End Launch PCB, Up To 8 GHz



RFPCB-SMP-MS-8G-207

Mechanical Specifications

Size

Length	0.289in	[7.34mm]
Width/Dia.	0.25in	[6.35mm]
Height	0.171in	[4.34mm]
Weight	0.004lbs	[1.81g]
Mating Cycles	100Cycles	

Material Specifications

Description	Material	Plating
Contact	Beryllium Copper	Gold MIL-DTL-45204
Insulation	PTFE	
Body	Brass	Gold MIL-DTL-45204

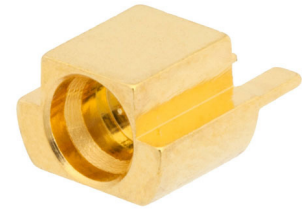
Environmental Specifications

Temperature

Operating Range	-55deg C to +155deg C
Humidity	MIL-STD-202, Method 106 (except 7b omitted)
Shock	MIL-STD-202, Method 213, Condition I
Vibration	MIL-STD-202, Method 204, Condition D
Salt Spray	MIL-STD-202, Method 101, Condition B

Click the following link (or enter part number in "SEARCH" on website) to obtain additional part information including price, inventory and certifications:
[SMP Male Full Detent Connector Solder Attachment End Launch PCB, Up To 8 GHz RFPCB-SMP-MS-8G-207](#)

SMP Male Full Detent Connector Solder Attachment
End Launch PCB, Up To 8 GHz



RFPCB-SMP-MS-8G-207

Compliance Certifications (see [product page](#) for current document)

Plotted and Other Data

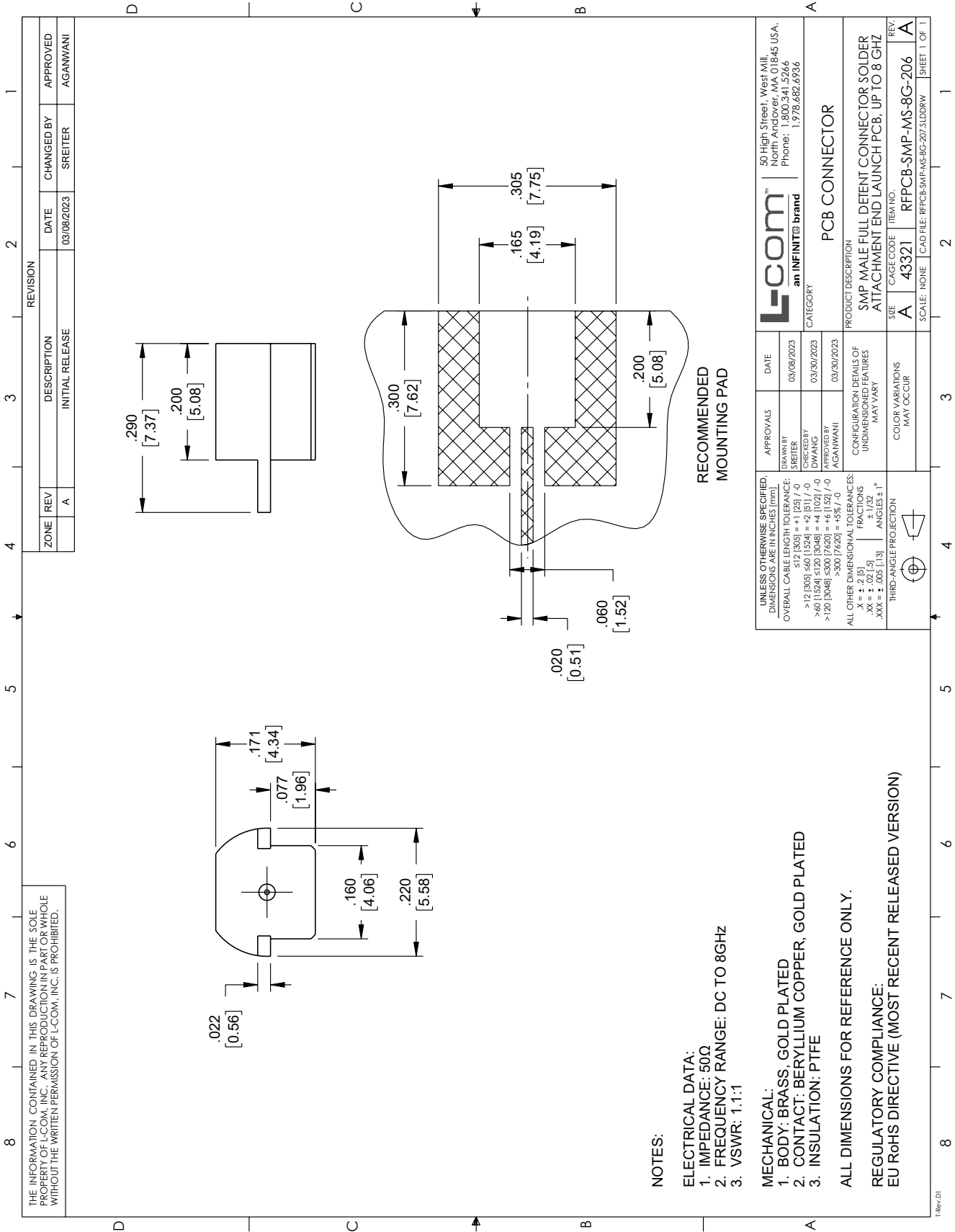
SMP Male Full Detent Connector Solder Attachment End Launch PCB, Up To 8 GHz from L-com has same day shipment for domestic and International orders. Our portfolio includes coaxial cable assemblies, connectors, adapters and custom products as well as lightning and surge protectors, NEMA rated enclosures, and an RF product line which includes antennas, amplifiers, passive, and active components. Click the following link (or enter part number in "SEARCH" on website) to obtain additional part information including price, inventory and certifications: SMP Male Full Detent Connector Solder Attachment End Launch PCB, Up To 8 GHz RFPCB-SMP-MS-8G-207

URL: <https://www.l-com.com/smp-male-full-detent-connector-solder-attachment-end-launch-pcb-up-8-ghz-rfpcb-smp-ms-8g-207-p.aspx>

The information contained within this document is accurate to the best of our knowledge and representative of the part described herein. It may be necessary to make modifications to the part and/or the documentation of the part in order to impliment improvements. L-com reserves the right to make such changes as required. Unless otherwise stated, all specifications are nominal. L-com does not make any representation or warranty regarding the suitability of the part described herein for any particular purpose, and L-com does not assume liability arising out of the use of any part or document.ontained within this document is accurate to the best of our knowledge and representative of the part described herein. It may be necessary to make modifications to the part and/or the documentation of the part in order to impliment improvements. L-com reserves the right to make such changes as required. Unless otherwise stated, all specifications are nominal. L-com does not make any representation or warranty regarding the suitability of the part described herein for any particular purpose, and L-com does not assume liability arising out of the use of any part or document.

SMP Male Full Detent Connector Solder Attachment End Launch PCB, Up To 8 GHz

L-com CAD Drawing



THE INFORMATION CONTAINED IN THIS DRAWING IS THE SOLE PROPERTY OF L-COM, INC.. ANY REPRODUCTION IN PART OR WHOLE WITHOUT THE WRITTEN PERMISSION OF L-COM, INC. IS PROHIBITED.

NOTES:
ELECTRICAL DATA:
 1. IMPEDANCE: 50Ω
 2. FREQUENCY RANGE: DC TO 8GHZ
 3. VSWR: 1.1:1

MECHANICAL:
 1. BODY: BRASS, GOLD PLATED
 2. CONTACT: BERYLLIUM COPPER, GOLD PLATED
 3. INSULATION: PTFE

ALL DIMENSIONS FOR REFERENCE ONLY.

REGULATORY COMPLIANCE:
 EU RoHS DIRECTIVE (MOST RECENT RELEASED VERSION)

ZONE	REV	DESCRIPTION	DATE	CHANGED BY	APPROVED
	A	INITIAL RELEASE	03/08/2023	SREITER	AGANWANI

UNLESS OTHERWISE SPECIFIED DIMENSIONS ARE IN INCHES [mm]	APPROVALS	DATE	ITEM NO.
OVERALL CABLE LENGTH TOLERANCE: ≤12 [305] = +1 [25] / -0 >12 [305] ≤60 [1524] = +2 [51] / -0 >60 [1524] ≤120 [3048] = +4 [102] / -0 >120 [3048] ≤300 [7620] = +6 [152] / -0 >300 [7620] = +5% / -0	DRAWN BY: SREITER CHECKED BY: DWANG APPROVED BY: AGANWANI	03/08/2023 03/30/2023 03/30/2023	PCB CONNECTOR
ALL OTHER DIMENSIONAL TOLERANCES: XX = ± .2 [5.1] FRACTIONS XXX = ± .005 [0.127] ANGLES ± 1° THIRD-ANGLE PROJECTION	CONFIGURATION DETAILS OF UNDIMENSIONED FEATURES MAY VARY	COLOR VARIATIONS MAY OCCUR	PRODUCT DESCRIPTION: SMP MALE FULL DETENT CONNECTOR SOLDER ATTACHMENT END LAUNCH PCB, UP TO 8 GHZ
			SCALE: NONE
			CAD FILE: RFP-MS-8G-207.SLDDRW
			REV: A

L-com
 an INFINITE brand
 50 High Street, West Mill,
 North Andover, MA 01845 USA,
 Phone: 1.800.341.5266
 1.978.682.6936

T:Rev: 01