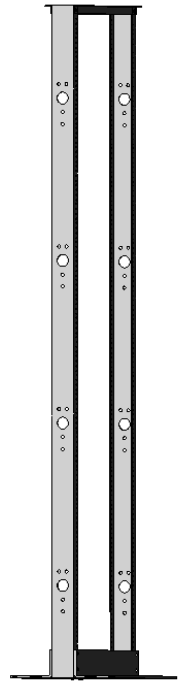
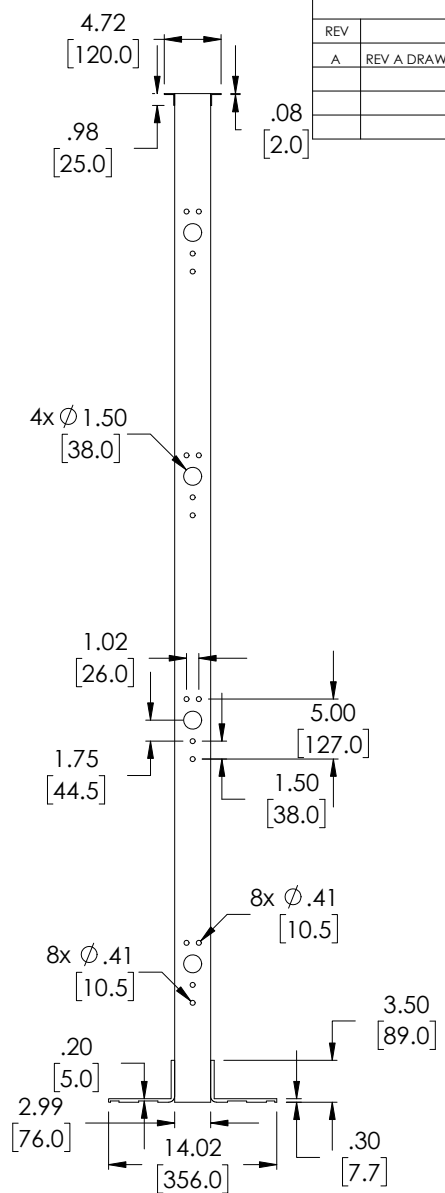
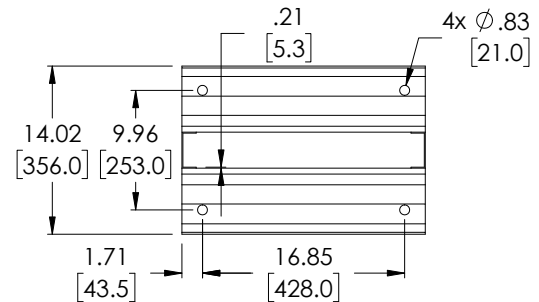
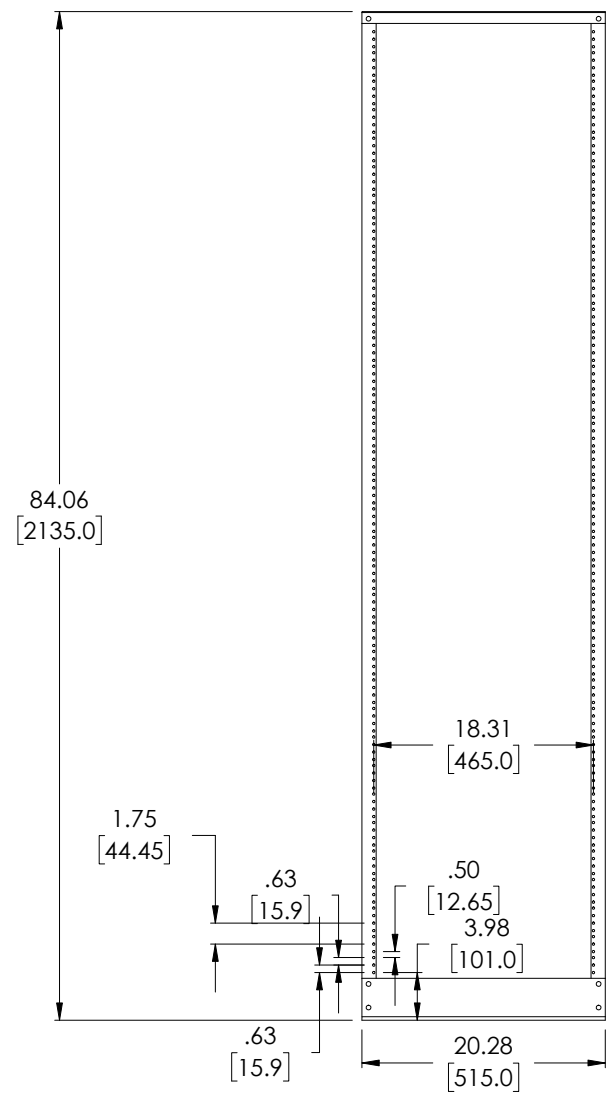


THE INFORMATION CONTAINED IN THIS DRAWING IS THE SOLE PROPERTY OF L-COM, INC. ANY REPRODUCTION IN PART OR WHOLE WITHOUT THE WRITTEN PERMISSION OF L-COM, INC. IS PROHIBITED.

REVISIONS			
REV	DESCRIPTION	DATE	APPROVED
A	REV A DRAWING RELEASED	11/26/2018	JYOU

D  
C  
B  
A

D  
C  
B  
A



UNLESS OTHERWISE SPECIFIED, DIMENSIONS ARE IN INCHES [mm] OVERALL CABLE LENGTH TOLERANCE: ≤12 [305] = +1 [25] / -0 >12 [305] ≤60 [1524] = +2 [51] / -0 >60 [1524] ≤120 [3048] = +4 [102] / -0 >120 [3048] ≤300 [7620] = +6 [152] / -0 >300 [7620] = +5% / -0% ALL OTHER DIMENSIONAL TOLERANCES: .X = ± .2 [5.08] .XX = ± .02 [1.51] .XXX = ± .005 [1.13]	APPROVALS DRAWN BY JYOU	DATE 11/02/2018
	CHECKED BY BGATES	DATE 11/02/2018
	APPROVED BY BGATES	DATE 11/02/2018
	CONFIGURATION DETAILS OF UNDIMENSIONED FEATURES MAY VARY	
PROJECTION 	COLOR VARIATIONS MAY OCCUR	SIZE <b>A</b>

<b>L-com</b> Global Connectivity 50 HIGH STREET NORTH ANDOVER, MA 01845	
CATEGORY <b>ECore DuroRacks</b>	
PRODUCT DESCRIPTION <b>L-COM 2 POST ALUMINUM 19" OPEN FRAME          RACK - BLACK - 45U</b>	
DWG. NO. <b>RP00005-2</b>	REV. <b>A</b>
SCALE: NONE	CAD FILE: RP00005-2.SLDDRW
SHEET 1 OF 1	

8 7 6 5 4 3 2 1