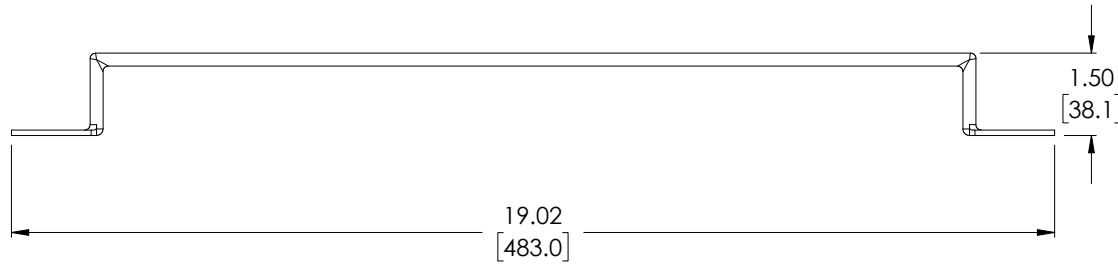
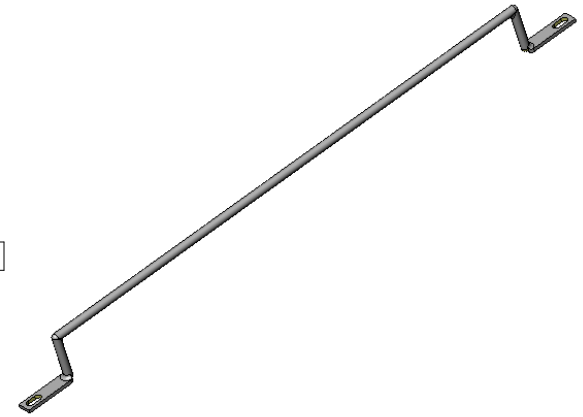
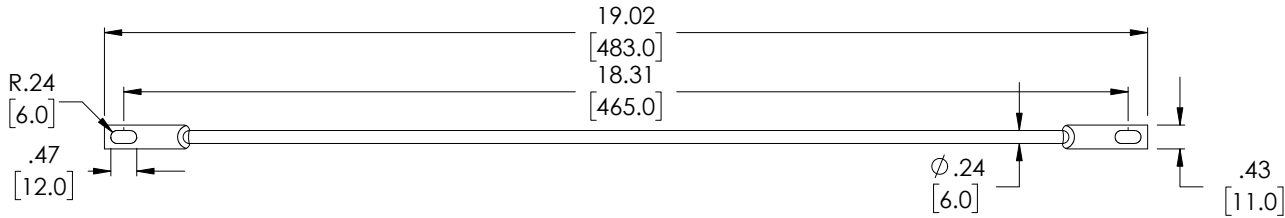


THE INFORMATION CONTAINED IN THIS DRAWING IS THE SOLE PROPERTY OF L-COM, INC. ANY REPRODUCTION IN PART OR WHOLE WITHOUT THE WRITTEN PERMISSION OF L-COM, INC. IS PROHIBITED.

REVISIONS			
REV	DESCRIPTION	DATE	APPROVED
A	REV A DRAWING RELEASED	11/26/2018	JYOU



UNLESS OTHERWISE SPECIFIED, DIMENSIONS ARE IN INCHES [mm] OVERALL CABLE LENGTH TOLERANCE: ≤12 [305] = +1 [25] / -0 >12 [305] ≤60 [1524] = +2 [51] / -0 >60 [1524] ≤120 [3048] = +4 [102] / -0 >120 [3048] ≤300 [7620] = +6 [152] / -0 >300 [7620] = +5% / -0% ALL OTHER DIMENSIONAL TOLERANCES: .X = ± .2 [5.08] .XX = ± .02 [1.51] .XXX = ± .005 [1.13]	APPROVALS DRAWN BY JYOU	DATE 11/02/2018	50 HIGH STREET NORTH ANDOVER, MA 01845	
	CHECKED BY BGATES	11/02/2018		CATEGORY PATCH RANELS/RACKS
	APPROVED BY BGATES	11/02/2018	PRODUCT DESCRIPTION L-COM 90° ROUND BEND LACING BAR 1.5" OFFSET - 10 PACK	REV. A
	PROJECTION 	CONFIGURATION DETAILS OF UNDIMENSIONED FEATURES MAY VARY	COLOR VARIATIONS MAY OCCUR	SIZE A

FSCM NO.	DWG. NO.	SCALE: NONE	CAD FILE: RP00006-10.SLDDRW	SHEET 1 OF 1
43321	RP00006-10			