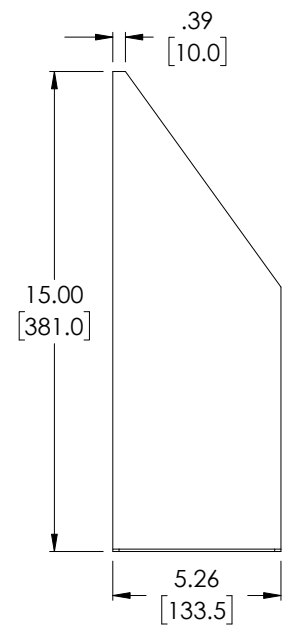
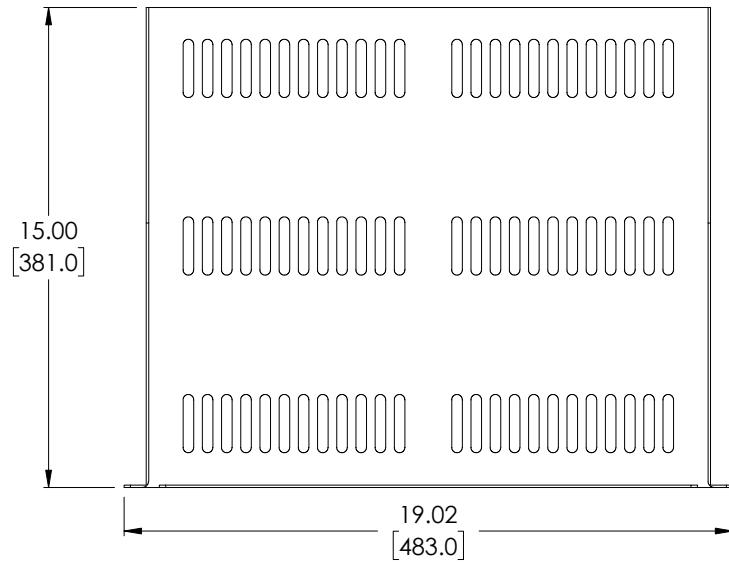
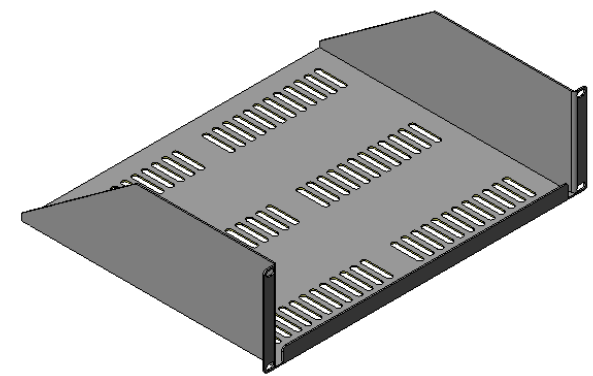
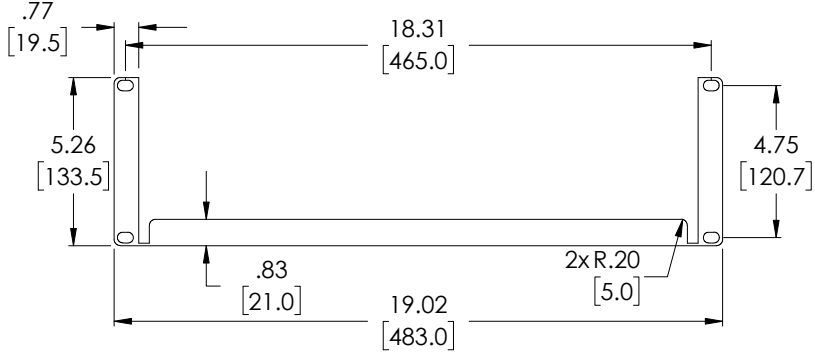


THE INFORMATION CONTAINED IN THIS DRAWING IS THE SOLE PROPERTY OF L-COM, INC. ANY REPRODUCTION IN PART OR WHOLE WITHOUT THE WRITTEN PERMISSION OF L-COM, INC. IS PROHIBITED.

| REVISIONS | | | |
|-----------|------------------------|------------|----------|
| REV | DESCRIPTION | DATE | APPROVED |
| A | REV A DRAWING RELEASED | 11/26/2018 | JYOU |
| | | | |
| | | | |



| | | | | | | |
|--|-------------------------------|--|---|--|--------------------------|------------------------------|
| UNLESS OTHERWISE SPECIFIED, DIMENSIONS ARE IN INCHES [mm] OVERALL CABLE LENGTH TOLERANCE: ≤12 [305] = +1 [25] / -0 >12 [305] ≤60 [1524] = +2 [51] / -0 >60 [1524] ≤120 [3048] = +4 [102] / -0 >120 [3048] ≤300 [7620] = +6 [152] / -0 >300 [7620] = +5% / -0% ALL OTHER DIMENSIONAL TOLERANCES: .X = ±.2 [5.08] .XX = ±.02 [1.51] .XXX = ±.005 [1.13] | APPROVALS DRAWN BY JYOU | DATE 11/05/2018 | | 50 HIGH STREET NORTH ANDOVER, MA 01845 | | |
| | CHECKED BY BGATES | DATE 11/05/2018 | | CATEGORY RACK FILLER PANELS | | |
| | APPROVED BY BGATES | DATE 11/05/2018 | PRODUCT DESCRIPTION L-COM VENTED 19" RACKMOUNT SHELF 15" DEPTH - 3U | | | |
| | PROJECTION | CONFIGURATION DETAILS OF UNDIMENSIONED FEATURES MAY VARY | COLOR VARIATIONS MAY OCCUR | SIZE A | FSCM NO. 43321 | DWG. NO. RP00013-3 |