

SMA Male Connector Crimp/Solder Attachment for LMR-100, RG174, RG188, RG316



SC-100-SM-LC



Times Microwave Systems Connector Specification

Configuration

- SMA Male Connector
- 50 Ohms
- Straight Body Geometry
- Connector Interface Types: LMR-100A-PVC, RG174, RG188, RG316, 100-Series

Features

- Designed to industry standard interface dimensions
- Quality body materials and plating
- Crimp/Solder attachment

Applications

- RF Boxes and components
- RF Test systems
- General Purpose RF Interconnect
- Laboratory applications

Description

L-com's SMA Male connector for LMR-100A-PVC, RG174, RG188, RG316 and 100-Series coax uses a Crimp/Solder attachment method. This SMA connector is one of the many RF coaxial connectors in L-com's product line up and like all our products, they will ship the same day. Our SMA Male connector operates in the frequency range supported by LMR-100A-PVC coax.

The specifications and a basic dimensional drawing for TC-100-SM-LC Male SMA connector can be found in this datasheet PDF. L-com's portfolio of RF and microwave connectors allows users to choose from a large number of options when building assemblies to fit their RF interconnect needs. RF cables can be created to fulfill many interconnect applications ranging from In the Box hookup, test equipment connectivity or as part of a system installation. In addition to an offering of RF connectors and coaxial cable L-com offers both standard and custom cable assemblies to fit a customer's specific needs.

Electrical Specifications

Description	Minimum	Typical	Maximum	Units
Frequency Range	DC		6	GHz
VSWR			1.3:1	
Operating Voltage (AC)			375	Vrms
Dielectric Withstanding Voltage (AC)			500	Vrms
Insulation Resistance	5,000			MOhms
Impedance		50		Ohms

Performance by Frequency

Description	F1	F2	F3	F4	F5	Units
Frequency Range	DC to 3	3 to 6				GHz
VSWR, Max	1.2:1	1.3:1				

Electrical Specification Notes:
Insertion loss is $=0.1 \cdot \sqrt{FGHz}$

SMA Male Connector Crimp/Solder Attachment for LMR-100, RG174, RG188, RG316



SC-100-SM-LC

Mechanical Specifications

Size

Length	1 in [25.4 mm]
Width	0.32 in [8.13 mm]
Height	0.32 in [8.13 mm]
Weight	0.0095 lbs [4.31 g]
Mating Cycles	500 Cycles
Mating Torque	7 to 10 in-lbs [[0.79 to 1.13 Nm]]
Cable Retention Force	20 lbs [9.07 kg]

Material Specifications

Description	Material	Plating
Contact	Brass	Gold 15 µin minimum
Insulation	PTFE	
Body	Brass	Nickel 200 µin minimum
Coupling Nut	Brass	Nickel 200 µin minimum
Gasket	Silicone	
Crimp Sleeve	Brass	Nickel 200 µin minimum

Environmental Specifications

Temperature

Operating Range	-40 to +125 deg C
Shock	MIL-STD 202G, Meth 213, Cond I
Vibration	MIL-STD 202G, Meth 204, Cond D
Thermal Shock	MIL-STD 202G, Meth 107, Cond B

Compliance Certifications (see [product page](#) for current document)

Plotted and Other Data

Notes:

SMA Male Connector Crimp/Solder Attachment for LMR-100, RG174, RG188, RG316

SC-100-SM-LC



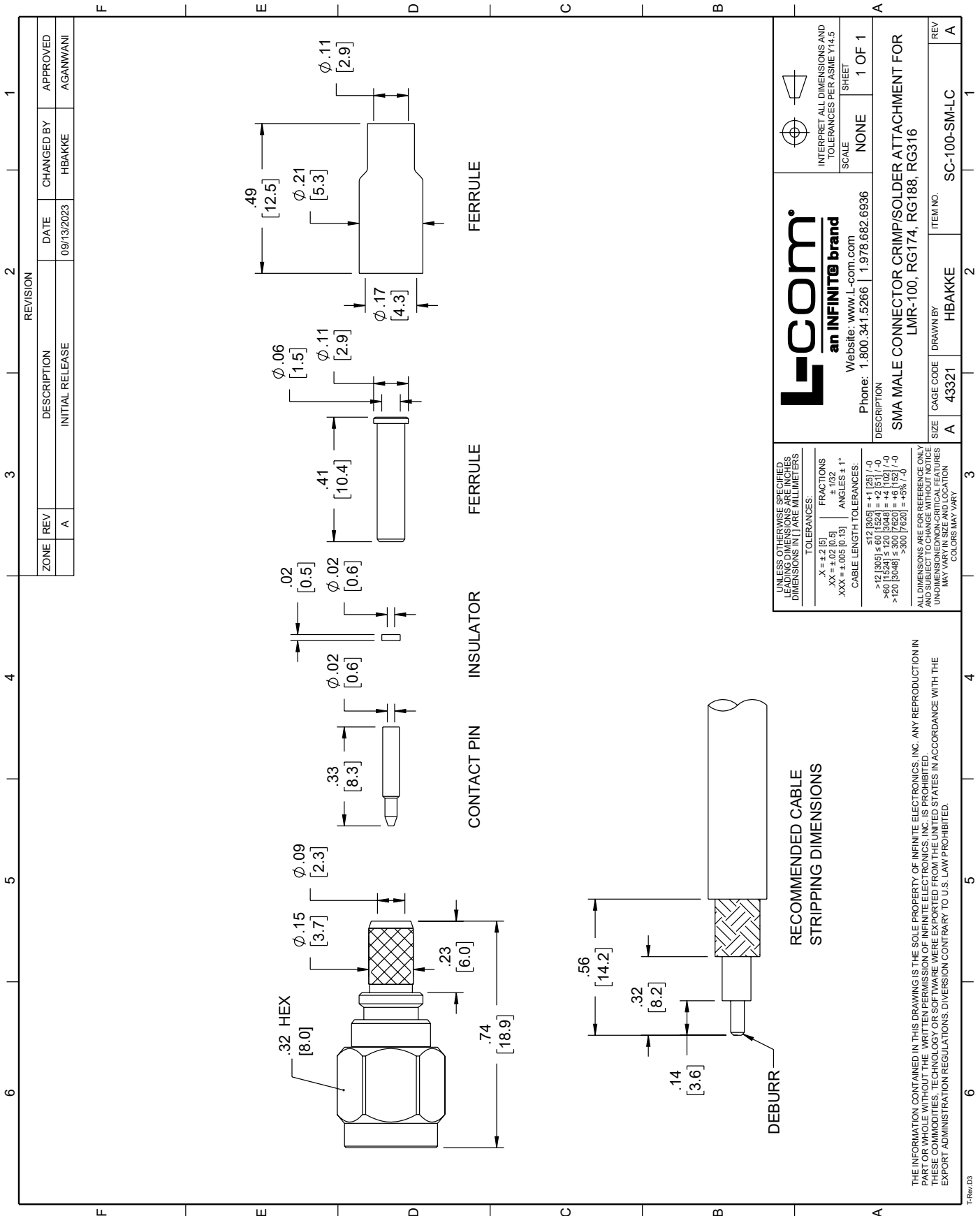
SMA Male Connector Crimp/Solder Attachment for LMR-100, RG174, RG188, RG316 from L-com has same day shipment for domestic and International orders. Our portfolio includes coaxial cable assemblies, connectors, adapters and custom products as well as lightning and surge protectors, NEMA rated enclosures, and an RF product line which includes antennas, amplifiers, passive, and active components.

URL: <https://www.l-com.com/sma-male-connector-crimp-solder-attachment-lmr-100-rg174-rg188-rg316-sc-100-sm-lc-p.aspx>

The information contained within this document is accurate to the best of our knowledge and representative of the part described herein. It may be necessary to make modifications to the part and/or the documentation of the part in order to implement improvements. L-com reserves the right to make such changes as required. Unless otherwise stated, all specifications are nominal. L-com does not make any representation or warranty regarding the suitability of the part described herein for any particular purpose, and L-com does not assume liability arising out of the use of any part or document.

SC-100-SM-LC CAD Drawing

SMA Male Connector Crimp/Solder Attachment for LMR-100, RG174, RG188, RG316



ZONE	REV	DESCRIPTION	DATE	CHANGED BY	APPROVED
	A	INITIAL RELEASE	09/13/2023	HBAKKE	AGANWANI

REVISION	DESCRIPTION	DATE	CHANGED BY	APPROVED
	INITIAL RELEASE	09/13/2023	HBAKKE	AGANWANI

DESCRIPTION	ITEM NO.	SCALE	SHEET
SMA MALE CONNECTOR CRIMP/SOLDER ATTACHMENT FOR LMR-100, RG174, RG188, RG316	43321	NONE	1 OF 1

UNLESS OTHERWISE SPECIFIED, LEADING DIMENSIONS ARE IN INCHES DIMENSIONS IN [] ARE MILLIMETERS

TOLERANCES:
 X = ±.2 [5]
 XX = ±.02 [0.5]
 XXX = ±.005 [0.13]
 FRACTIONS ± 1/32
 ANGLES ± 1°
 CABLE LENGTH TOLERANCES:
 ≤12 [305] ±.1 [25]
 >12 [305] ≤60 [1524] = ±.2 [5]
 >60 [1524] ≤120 [3048] = ±.4 [102]
 >120 [3048] ≤300 [7620] = ±.6 [152]
 >300 [7620] = ±.9% [7.6]

ALL DIMENSIONS ARE FOR REFERENCE ONLY AND SUBJECT TO CHANGE WITHOUT NOTICE UNLESS OTHERWISE SPECIFIED DIMENSIONS MAY VARY IN SIZE AND LOCATION COLORS MAY VARY

THE INFORMATION CONTAINED IN THIS DRAWING IS THE SOLE PROPERTY OF INFINITE ELECTRONICS, INC. ANY REPRODUCTION IN PART OR WHOLE, WITHOUT THE WRITTEN PERMISSION OF INFINITE ELECTRONICS, INC. IS PROHIBITED. THESE COMMODITIES, TECHNOLOGY OR SOFTWARE WERE EXPORTED FROM THE UNITED STATES IN ACCORDANCE WITH THE EXPORT ADMINISTRATION REGULATIONS. DIVERSION CONTRARY TO U.S. LAW PROHIBITED.

© 2023 Infinite Electronics, Inc. L-com is a registered trademark of Infinite Electronics, Inc.
 USA & Canada +1 (800) 341-5266 | International +1 (978) 682-6936 | L-com.com