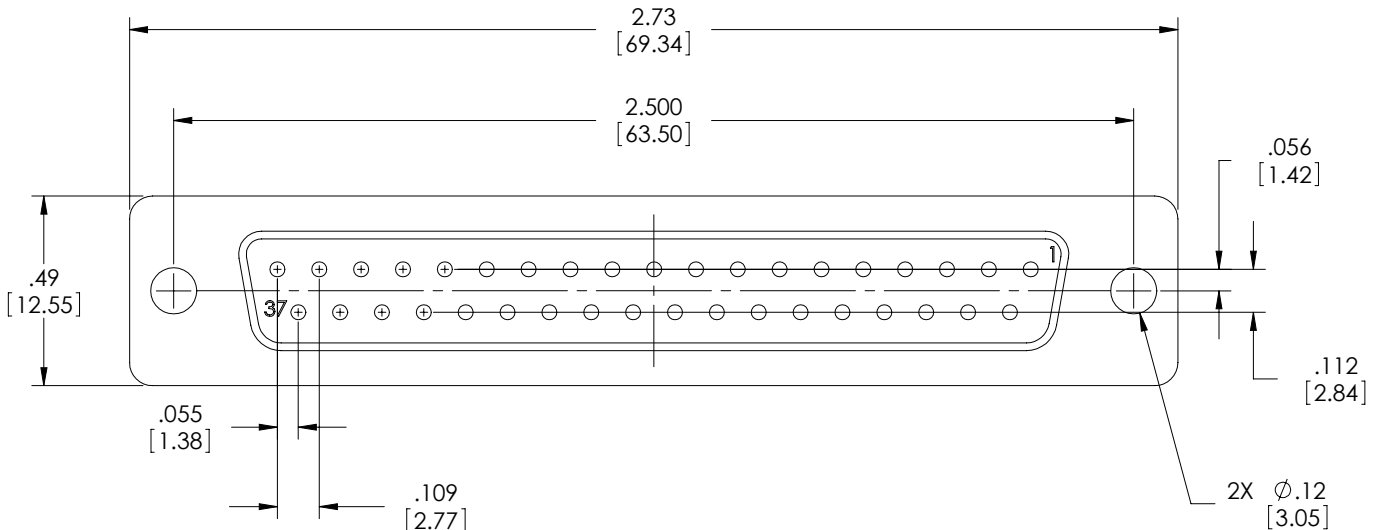
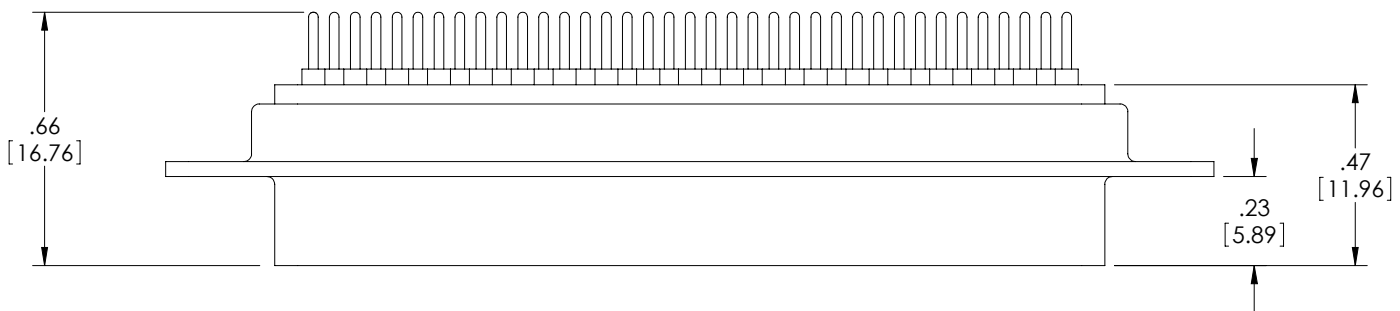


THE INFORMATION CONTAINED IN THIS DRAWING IS THE SOLE PROPERTY OF L-COM, INC. ANY REPRODUCTION IN PART OR WHOLE WITHOUT THE WRITTEN PERMISSION OF L-COM, INC. IS PROHIBITED.

REVISIONS			
REV	DESCRIPTION	DATE	APPROVED
A	DRAWING REPLACES SD37S-PC-OD1	10/20/14	D. CASTRO



NOTES:

MATERIALS:

SHELL: COLD ROLLED STEEL
 CONTACTS: BRASS
 INSULATOR: THERMOPLASTIC PBT, UL94V-0

FINISH:

SHELL: TIN PLATED
 CONTACT SURFACES: GOLD

ELECTRICAL:

CURRENT RATING: 5 AMP
 DIELECTRIC WITHSTANDING VOLTAGE: 1000 VAC
 INSULATION RESISTANCE: 1000 MΩ PER MINUTE @ 500 VDC
 CONTACT RESISTANCE: 20mΩ MAX

MISCELLANEOUS:

OPERATING TEMPERATURE: -55°C ~ +105°C
 ALL DIMENSIONS ARE FOR REFERENCE ONLY

REGULATORY COMPLIANCE:

CE2011/65/EU (RoHS DIRECTIVE)

UNLESS OTHERWISE SPECIFIED, DIMENSIONS ARE IN INCHES [mm] OVERALL CABLE LENGTH TOLERANCE: ≤12 [305] = +1 [25] / -0 >12 [305] ≤60 [1524] = +2 [51] / -0 >60 [1524] ≤120 [3048] = +4 [102] / -0 >120 [3048] ≤300 [7620] = +6 [152] / -0 >300 [7620] = +5% / -0% ALL OTHER DIMENSIONAL TOLERANCES: .X = ± .2 [5.08] .XX = ± .02 [5.1] .XXX = ± .005 [1.3]	APPROVALS DRAWN BY B.MAZEJKA	DATE 12/18/2003	45 BEECHWOOD DRIVE NORTH ANDOVER, MA 01845		
	CHECKED BY C.MCCORMICK	DATE 12/19/2003		CATEGORY D-SUBMINIATURE	
	APPROVED BY D.PARHAM	DATE 12/19/2003	PRODUCT DESCRIPTION CONNECTOR, DB37F PCB		
	PROJECTION 	COLOR VARIATIONS MAY OCCUR	SIZE A	FSCM NO. 43321	DWG. NO. SD37S-PC