



Data Surge Protector, Indoor, 10 Gigabit Ethernet

Data Surge Protection Device Technical Data Sheet

TSJ-10GBE-LC

Features

- 10 Gigabit Ethernet compatible
- Hybrid SASD, GDT protection technology
- Shielded RJ-45 connectivity
- DIN-Rail mounting clip
- Integral ground wire, lug

Applications

- 10 Gigabit Ethernet Networks
- Telecommunications Base Stations
- IT & Data Centers
- Security Cameras
- Wireless Access Points
- Point-to-Point Links

Description

Data surge protector (also known as SPD or lightning protector) TSJ-10GBE-LC from L-Com, is an Indoor style SPD that utilizes state of the art hybrid SASD, GDT technology to protect equipment in 10 Gigabit Ethernet networks, while remaining transparent to data throughput. L-Com data surge protectors are available in stock with same day shipping.

Electrical Specifications

Description	Minimum	Typical	Maximum	Units
Connectors		Shielded RJ45		
Compatible Cables		Cat 6/6A STP, Cat 7 STP		
Data Protocols		10 Gigabit Ethernet		
Data Rate			10,000	Mb/s
Characteristic Impedance			100	Ohms
Series Impedance (Data)			1	Ohms
Capacitance (Differential)			30	pF
Capacitance (Common)			5	pF



an INFINIT[®] brand



Data Surge Protector, Indoor, 10 Gigabit Ethernet

Data Surge Protection Device Technical Data Sheet

TSJ-10GBE-LC

Surge Protection Specification

Description	Minimum	Typical	Maximum	Units
Surge Protection Technology		SASD, GDT		
Protected Pins		[1,2], [3,6], [4,5], [7,8]		
Protection Modes		L-G, L-L		
Response Time			5	ns

Mechanical Specifications

Size

Height	1 in	[25.4 mm]
Width	2.5 in	[63.5 mm]
Depth	2 in	[50.8 mm]
Weight	0.3 lbs	[136.08 g]
Housing Material and Plating	Powder Coated Aluminum	

Environmental Specifications

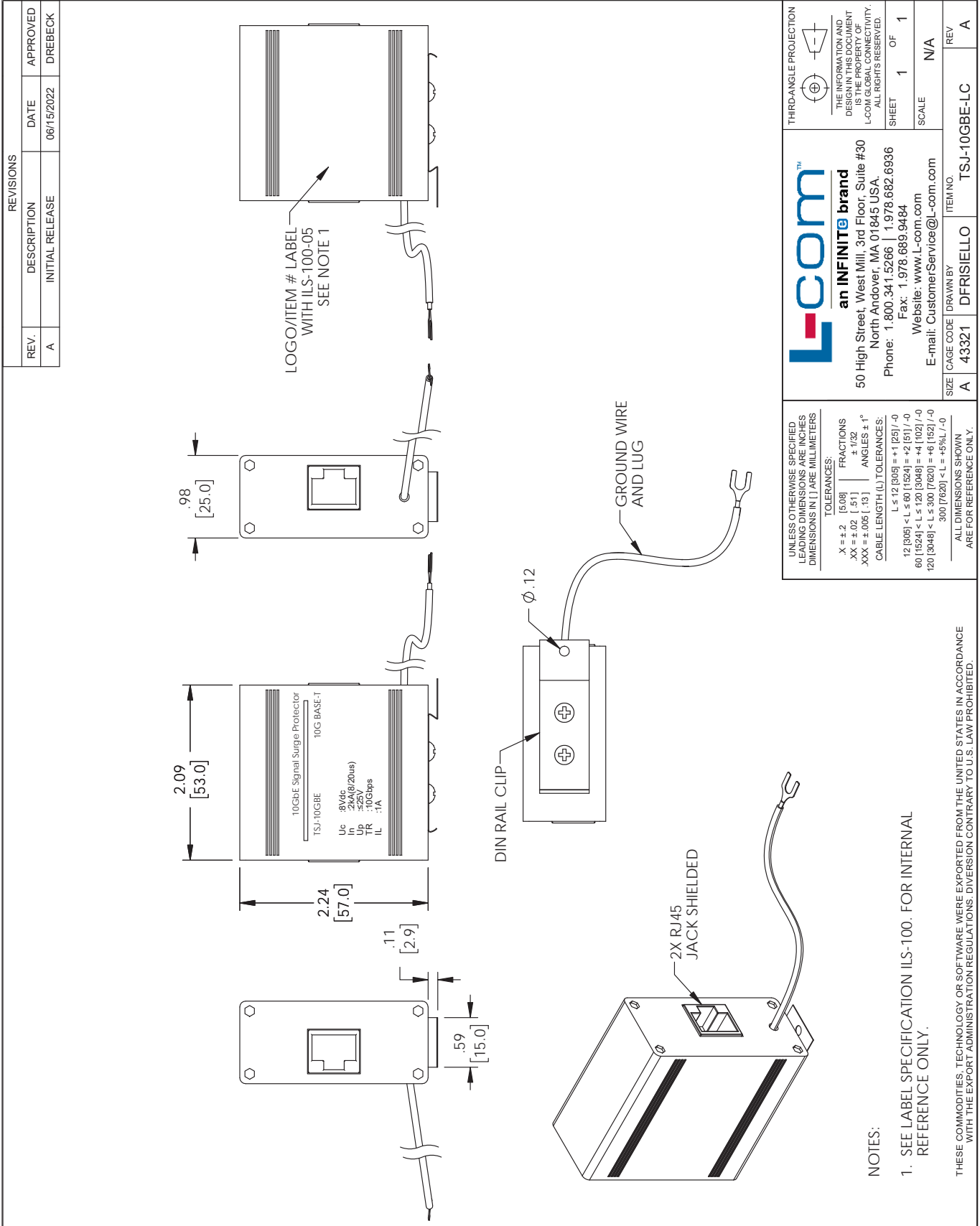
Operating Temperature	-40 to +75 deg C
Storage Temperature	-40 to +75 deg C
Mount Type	Din-Rail, Inline
Grounding	Internal Ground Wire, Lug

Our portfolio includes coaxial cable assemblies, connectors, adapters and custom products as well as lightning and surge protectors, NEMA rated enclosures, and an RF product line which includes antennas, amplifiers, passive, and active components.

The information contained in this document is accurate to the best of our knowledge and representative of the part described herein. It may be necessary to make modifications to the part and/or the documentation of the part, in order to implement improvements. L-com reserves the right to make such changes as required. Unless otherwise stated, all specifications are nominal. L-com does not make any representation or warranty regarding the suitability of the part described herein for any particular purpose, and L-com does not assume any liability arising out of the use of any part or documentation.

TSJ-10GBE-LC CAD Drawing

Data Surge Protector, Indoor, 10 Gigabit Ethernet



REVISIONS			
REV.	DESCRIPTION	DATE	APPROVED
A	INITIAL RELEASE	06/15/2022	DREBECK

L-comTM
an INFINITE brand

50 High Street, West Mill, 3rd Floor, Suite #30
North Andover, MA 01845 USA.
Phone: 1.800.341.5266 | 1.978.682.6936
Fax: 1.978.689.9484
Website: www.L-com.com
E-mail: CustomerService@L-com.com

THIRD-ANGLE PROJECTION

THE INFORMATION AND DESIGN IN THIS DOCUMENT IS THE PROPERTY OF L-COM GLOBAL CONNECTIVITY. ALL RIGHTS RESERVED.

SHEET 1 OF 1

SCALE N/A

UNLESS OTHERWISE SPECIFIED LEADING DIMENSIONS ARE INCHES DIMENSIONS IN [] ARE MILLIMETERS

TOLERANCES:

X = ±.2 [5.08] FRACTIONS ± 1/32

XX = ±.02 [.51] ANGLES ± 1°

XXX = ±.005 [.13] CABLE LENGTH (L) TOLERANCES:

L ≤ 12 [305] = +1 [25] / -0

12 [305] < L ≤ 60 [1524] = +2 [51] / -0

60 [1524] < L ≤ 120 [3048] = +4 [102] / -0

120 [3048] < L ≤ 300 [7620] = +6 [152] / -0

300 [7620] < L = +5% / -0

ALL DIMENSIONS SHOWN ARE FOR REFERENCE ONLY.

SIZE A CAGE CODE A 43321 DRAWN BY DFRISIELLO ITEM NO. TSJ-10GBE-LC REV A

NOTES:

1. SEE LABEL SPECIFICATION ILS-100. FOR INTERNAL REFERENCE ONLY.

THESE COMMODITIES, TECHNOLOGY OR SOFTWARE WERE EXPORTED FROM THE UNITED STATES IN ACCORDANCE WITH THE EXPORT ADMINISTRATION REGULATIONS. DIVERSION CONTRARY TO U.S. LAW PROHIBITED.