



Middle Atlantic Products, Inc.

middleatlantic.com

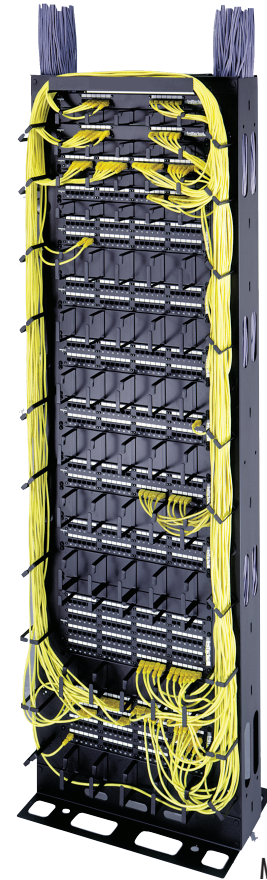
MK Series Racks

EIA Compliant

The MK Series 19" Cable Management Racks Optimized for high-density patching applications

Features

- Innovative design incorporates captive fasteners (no loose bolts) which provide for quick assembly times & uncommon strength
- 800 lb. or 500 lb. weight capacity, depending on mounting method
- 24" width for use with raised flooring tiles
- Oversized cable ducts for high density patching applications
- Unique swiveling front mount steel cable rings with position indexing
- Hook and loop cable fastening straps & front cable feed-through hole plugs included
- Abundant cable tie points accommodate hook and loop fastening straps and nylon wire ties
- Integral top cable tray front & rear
- Includes 100 qty. 10-32 rack screws
- Durable black powder coat finish



MK-19-45

Architects' and Engineers' Specifications

EIA compliant 19" cable management rack shall be Middle Atlantic Products model # MK-1945 / MK-1945-24. Overall dimensions of MK-___ shall be H ___ x W ___ , depth at base shall be ___ , depth of rail channels shall be ___ , depth at top including integrated cable trough shall be ___ (refer to chart). Useable height shall be 45 rackspace. Weight capacity shall be 500 lbs., evenly distributed with the base securely fastened, and 800 lbs., evenly distributed with the base of the rack securely fastened and the top of the rack braced to a structural building component (Note: Installation of cable management racks can vary widely with all types of conditions. Please note that mounting equipment in cantilever fashion, which effectively changes the center of gravity of the rack, will lessen the overall ability of the rack to bear weight). MK shall come equipped with multi-position cable management rings in twenty places, twelve 7" obround cable pass-through openings on front, eight 7" obround cable pass-through openings on each side, and integrated cable trough at top of rack. Multiple raised cable lacing points for cable management are provided.

OPTIONS

- Horizontal Lacer Bars shall be model # LBP-1X, please see master catalog for available styles
- Horizontal cable managers shall be model # HCM-X, please see master catalog for available styles
- Cable ladder adapter shall be model # MK-LA
- Rackmount Cable Tray shall be model # HCT-1 (1 rackspace), HCT-2 (2 rackspace)
- Vented Center Mount shelf be model # U2MS

electronic version available at middleatlantic.com

Engineered Mounting Solutions

US: New Jersey • California • Illinois • Voice: 973-839-1011 Fax: 973-839-1976 • middleatlantic.com
Canada: Ontario • British Columbia • Voice: 613-836-2501 Fax: 613-836-2690 • middleatlantic.ca

MK Series Basic Dimensions

All dimensions in inches unless otherwise noted [All bracketed dimensions are in millimeters]

