



**Dual Band 2.4/5.8 GHz 802.11a/b/g/n Wireless
USB WiFi Adapter**

Quick install guide

1.1 Package Contents

Open the package carefully and make sure that none of the items listed below are missing. (Note: Do not discard the packing materials in case of return. The unit must be shipped in its original package.)

- One Wireless LAN USB Adapter
- One Antenna 5dBi
- One CD-ROM with Drivers and User's Guide Included

1.2 System Requirements

The following are the minimum system requirements in order to use the USB adapter.

- PC/AT compatible computer with a USB interface.
- Windows 2000/XP/Vista/7 (32 and 64 bit) or Mac OS X 10.6 operating system.
- 30 MB of free disk space for installing the USB adapter driver and utility program.

1.3 Features

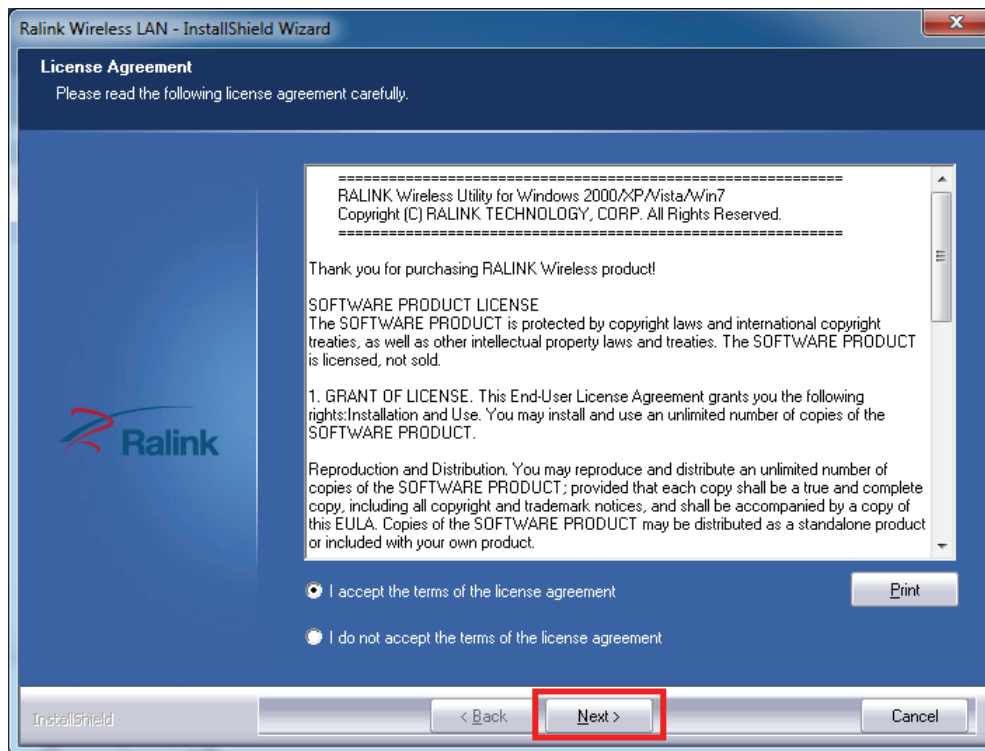
- Complies with IEEE 802.11a/b/g/n
- Dual Frequency---2.4/5.8 GHz
- Clearer signal and lower interference with 5.8 GHz frequency equals better performance and speed
- Higher speed of internet access under Dual Band.
- High speed USB 2.0 interface
- Security: 64/128bit WEP , WPA, and WPA2
- Supports software update
- Wireless N protocol 300Mbps throughput
- Downward compatible with 802.11b/g/a
- Support WSP WiFi fast security solution
- Support Reset fast solution
- Provides Soft AP, supports PSP connection
- Supports Ad-Hoc and Infrastructure modes
- Supports roaming between access points when configured in Infrastructure mode
- Eases to configure and provides monitoring information
- Supports Windows 2000/XP/VISTA/Win7/Linux/ Macintosh
- 5 dBi Detachable Antenna

Installing the Drivers for Windows

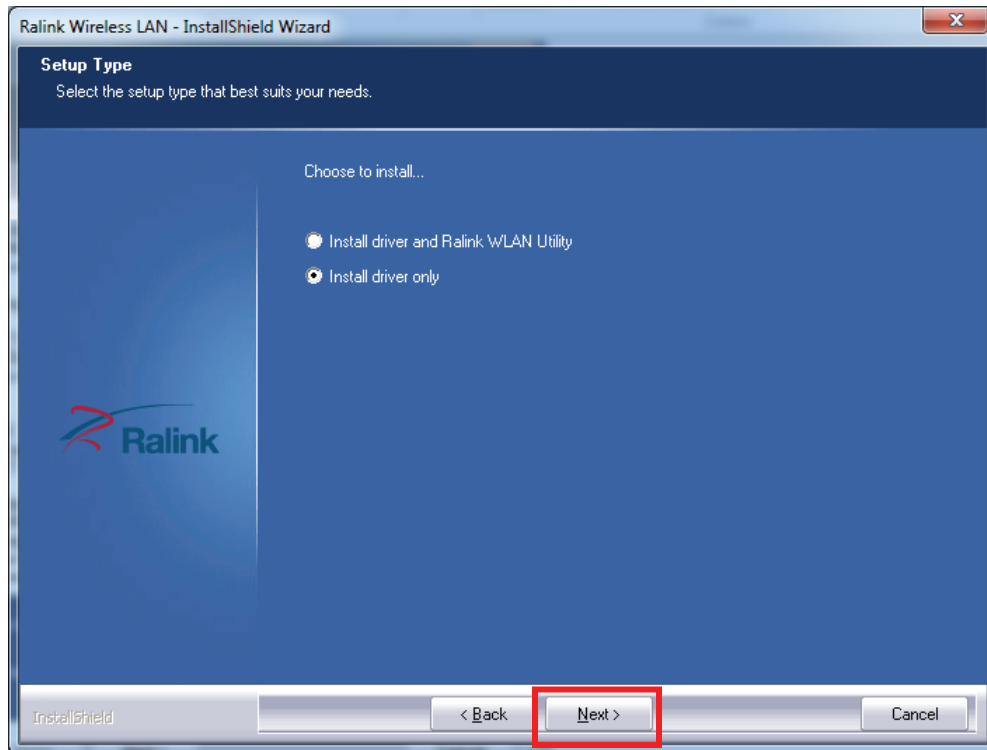
2.1 Place included CD into CD-ROM drive of your computer. Locate setup file and double click to start the installation process.



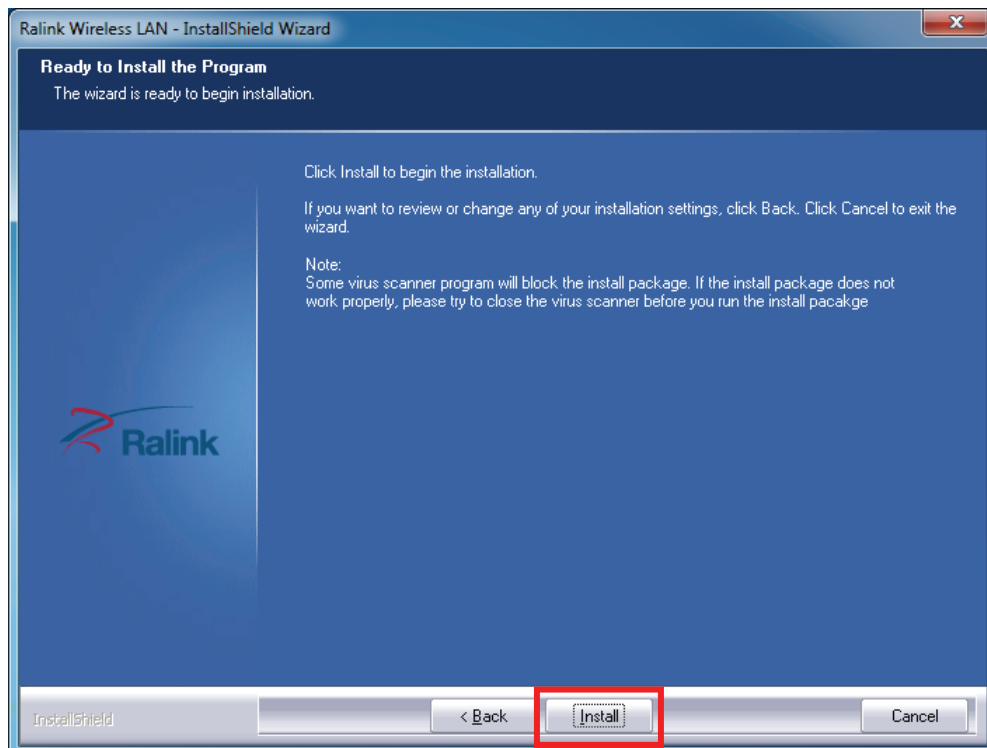
2.2 Click “I accept the agreement”, and then click “next” to continue.



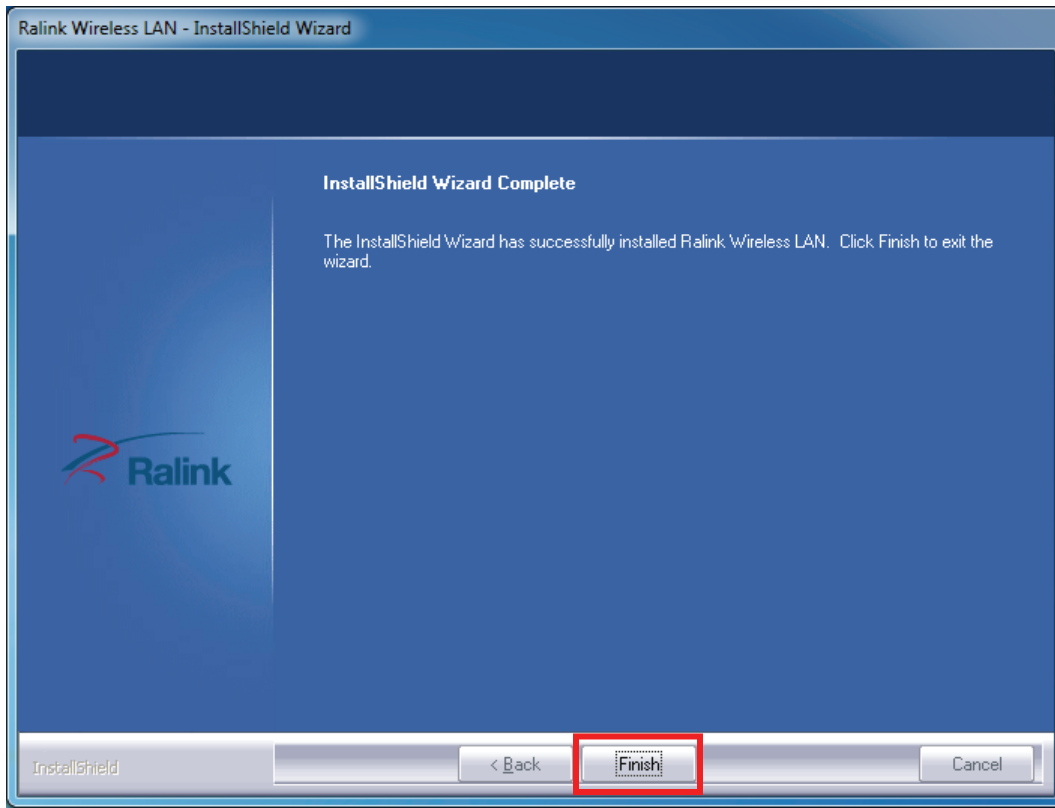
2.3 For advanced adapter modes such as AP functions, select “Install driver and Ralink WLAN Utility”. To use your operating system’s wireless networking utilities, select “Install driver only”. Click “Next” to continue.



2.4 Click “Install” to start the installation.



2.5 Click “Finish” to complete installation.



2.6 You can now use your operating system’s wireless utility to connect to a network.

