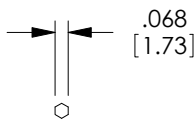
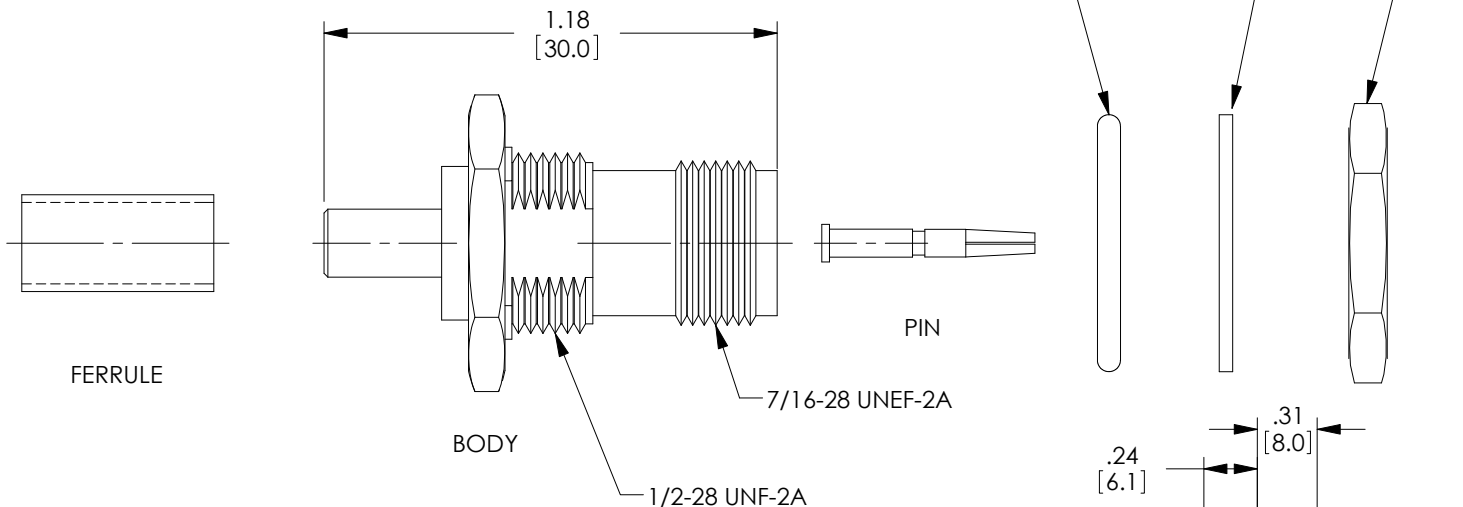
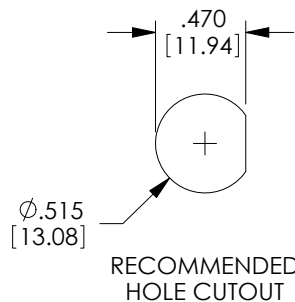


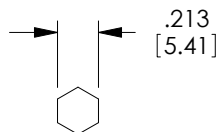
THE INFORMATION CONTAINED IN THIS DRAWING IS THE SOLE PROPERTY OF L-COM, INC. ANY REPRODUCTION IN PART OR WHOLE WITHOUT THE WRITTEN PERMISSION OF L-COM, INC. IS PROHIBITED.

REVISIONS			
REV	DESCRIPTION	DATE	APPROVED
A	INITIAL RELEASE	8/14/07	R.POLUBINSKI
B	5206: RE-DRAWN, ADDED PACKAGING NOTE, NEW FORMAT	12/15/10	D.FRISIELLO

DESCRIPTION	MATERIAL	FINISH
BODY	BRASS	NICKEL PLATE
CENTER PIN	BRASS	GOLD PLATE
DIELECTRIC	TFE	-
PRESS FIT FERRULE STUD	BRASS	NICKEL PLATE
FERRULE	BRASS	NICKEL PLATE
GASKET	RUBBER	RED
WASHER	BRASS	NICKEL PLATE
NUT	BRASS	NICKEL PLATE



RECOMMENDED PIN CRIMP



RECOMMENDED FERRULE CRIMP

NOTES:

IMPEDANCE: 50 OHM  
 FREQUENCY RANGE: DC ~ 11 GHz  
 VOLTAGE RATING: 500 VOLTS PEAK  
 DIELECTRIC WITHSTANDING VOLTAGE: 1500 VOLTS RMS  
 CABLE RETENTION: 40 LBS. PULL  
 APPLICATIONS: RG58, RG141, RG142, LMR195, CA-195R

COMPONENT SHALL BE INDIVIDUALLY PACKAGED IN ACCORDANCE WITH L-COM SPECIFICATION PS-0031.

RoHS Compliant ✓



UNLESS OTHERWISE SPECIFIED, DIMENSIONS ARE IN INCHES [mm] OVERALL CABLE LENGTH TOLERANCE: ≤12 [305] = +1 [25] / -0 >12 [305] ≤60 [1524] = +2 [51] / -0 >60 [1524] ≤120 [3048] = +4 [102] / -0 >120 [3048] ≤300 [7620] = +6 [152] / -0 >300 [7620] = +3% / -0% ALL OTHER DIMENSIONAL TOLERANCES: .X = ±.2 .XX = ±.02 .XXX = ±.005	APPROVALS K.BURGNER	DATE 3/27/06	45 BEECHWOOD DRIVE NORTH ANDOVER, MA 01845
	CHECKED BY K.BURGNER	DATE 3/27/06	
PROJECTION 	CONFIGURATION DETAILS OF UNDIMENSIONED FEATURES MAY VARY	PRODUCT DESCRIPTION CON,TNC Female BulkHD Crimp	SCALE: NONE CAD FILE: ATF-3700.SLDDRW
COLOR VARIATIONS MAY OCCUR	SIZE A	FSCM NO. 43321	DWG. NO. ATF-3700
SHEET 1 OF 1	REV. B	SHEET 1 OF 1	SHEET 1 OF 1