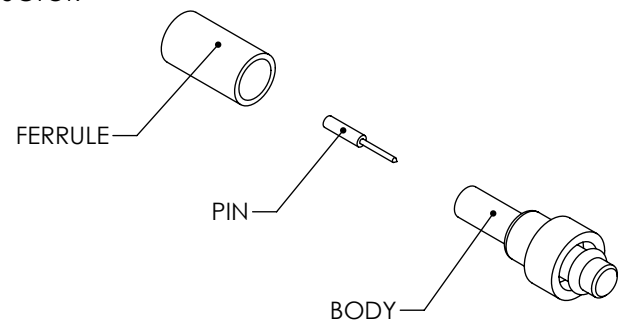
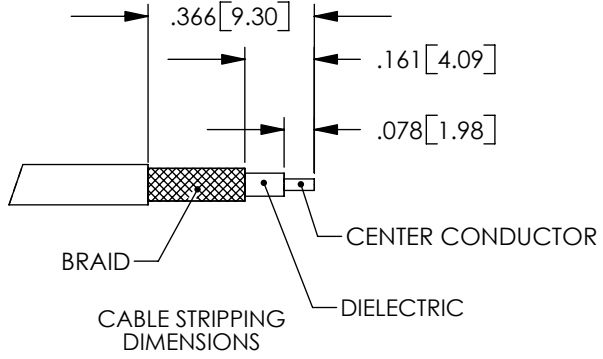
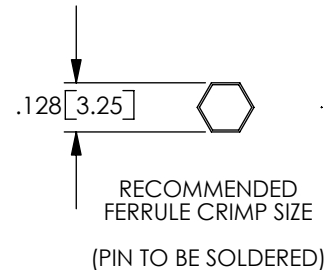
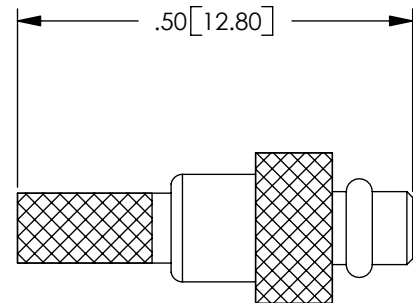
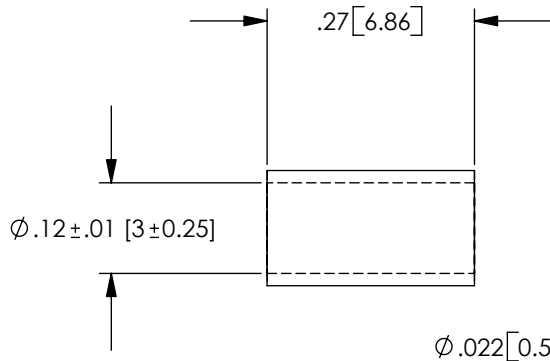


THE INFORMATION CONTAINED IN THIS DRAWING IS THE SOLE PROPERTY OF L-COM, INC. ANY REPRODUCTION IN PART OR WHOLE WITHOUT THE WRITTEN PERMISSION OF L-COM, INC. IS PROHIBITED.

REVISIONS			
REV	DESCRIPTION	DATE	CHANGED BY
A	INITIAL RELEASE	02/05/04	MCCORMICK
B	ECN# 2280 ADDED NOTES	12/29/05	MCCORMICK
C	ECN 3155: UPDATE DWG FORMAT	1/18/08	D.GRIFFIN



NOTES:

MATERIAL:

BODY: BRASS
 FERRULE: BRASS
 PIN: BRASS
 INSULATOR: PTFE

FINISH:

BODY: GOLD PLATE
 FERRULE: GOLD PLATE
 PIN: GOLD PLATE

ELECTRICAL:

IMPEDANCE: 50 OHM

PACKAGING:

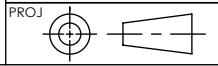
INDIVIDUALLY PACKAGE EACH ASSEMBLY UTILIZING APPROPRIATE SIZED BAG

APPLICATION:

RG316 COAXIAL CABLE.

RoHS Compliant ✓

UNLESS OTHERWISE SPECIFIED, DIMENSIONS ARE IN INCHES [mm]
 TOLERANCES TO BE:
 .X ± .1 [2.5] ANGLES ± 2°
 .XX ± .01 [0.25]
 .XXX ± .005 [0.13]
 OVERALL CABLE LENGTH TOL:
 ≤ 60 [1524] +3 [76.2] / -0
 > 60 [1524] +5% / -0%



APPROVALS	DATE
DRAWN BY C.MCCORMICK	02/05/2004
CHECKED BY D.PARHAM	02/05/2004
APPROVED BY R.CARRICK	02/05/2004

CONFIGURATION DETAILS OF UNDIMENSIONED FEATURES MAY VARY

L-com CONNECTIVITY PRODUCTS		45 BEECHWOOD DRIVE NORTH ANDOVER, MA 01845	
CATEGORY		COAXIAL	
PRODUCT DESCRIPTION		MMCX CRIMP PLUG	
SIZE	FSCM NO.	DWG. NO.	REV.
A	43321	BAC509	C
SCALE: NONE		CAD FILE: BAC509.SLDDRW	
SHEET 1 OF 1			