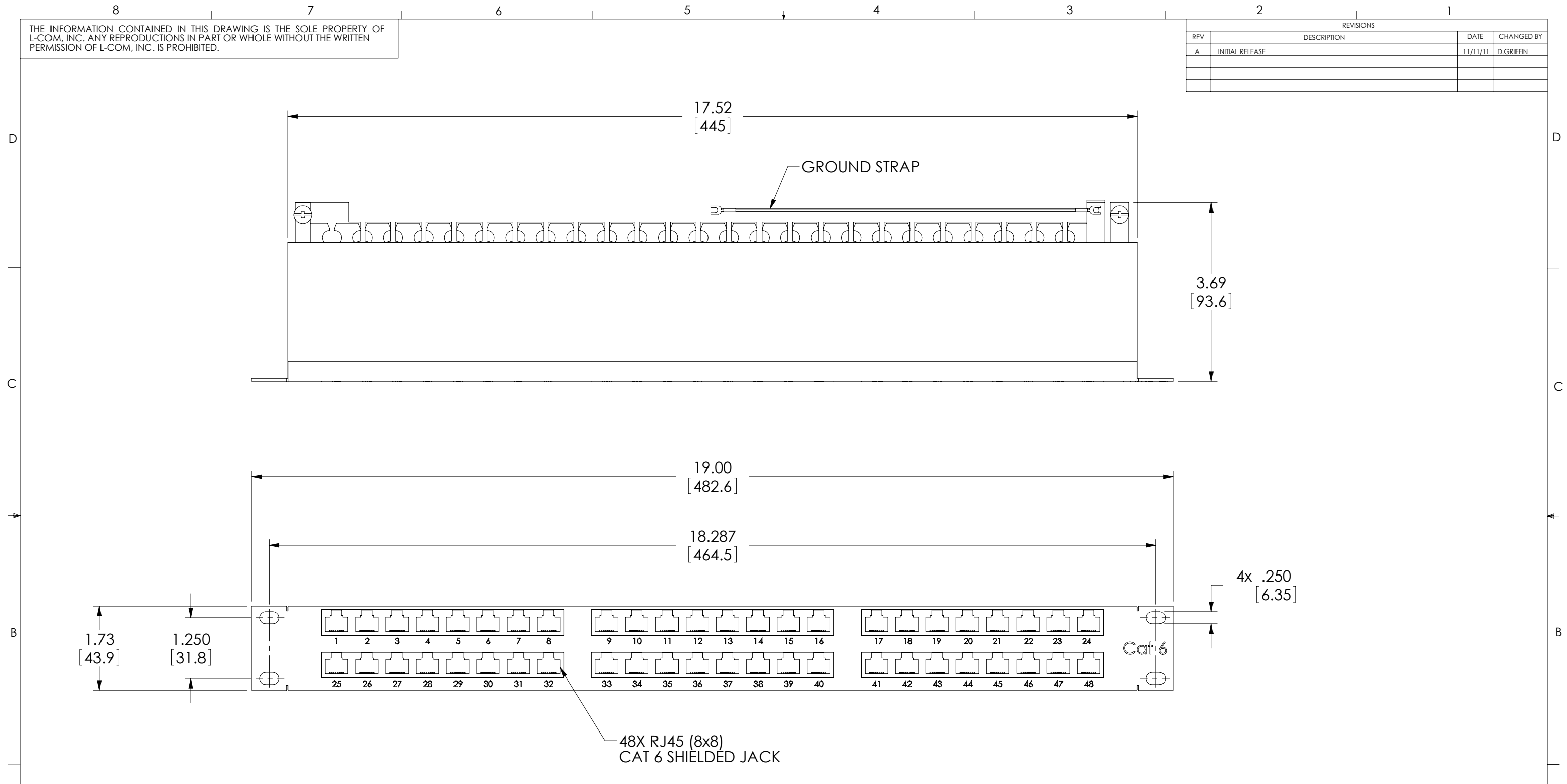


THE INFORMATION CONTAINED IN THIS DRAWING IS THE SOLE PROPERTY OF L-COM, INC. ANY REPRODUCTIONS IN PART OR WHOLE WITHOUT THE WRITTEN PERMISSION OF L-COM, INC. IS PROHIBITED.

REVISIONS			
REV	DESCRIPTION	DATE	CHANGED BY
A	INITIAL RELEASE	11/11/11	D.GRIFFIN



NOTES:

1. PANEL MATERIAL: .06" THICK COLD ROLLED STEEL.
2. FRONT PANEL FINISH: FLAT BLACK POWDER COAT.
3. SILKSCREEN COLOR: WHITE.
4. ALL DIMENSIONS ARE FOR REF. ONLY.
5. PANEL ASSEMBLY SHALL BE INDIVIDUALLY PACKAGED AND LABELED WITH STANDARD L-COM LABEL.

RoHS Compliant ✓

UNLESS OTHERWISE SPECIFIED, DIMENSIONS ARE IN INCHES [mm]
 OVERALL CABLE LENGTH TOLERANCE:
 ≤12 [305] = +1 [25] / -0
 >12 [305] ≤60 [1524] = +2[51] / -0
 >60 [1524] ≤120 [3048] = +4 [102] / -0
 >120 [3048] ≤300 [7620] = +6 [152] / -0
 >300 [7620] = +5% / -0%
 ALL OTHER DIMENSIONAL TOLERANCES:
 .X = ±.2
 .XX = ±.02
 .XXX = ±.005

APPROVALS	DATE
D. CASTRO	11/11/11
D. FRISIELLO	11/11/11
D. GALLAGHER	11/11/11

L-com Global Connectivity
 45 BEECHWOOD DRIVE
 NORTH ANDOVER, MA
 01845

CATEGORY		RACKS/PANELS	
PRODUCT DESCRIPTION			
1.75"X19"PNL CAT6 48PT SHLD			
SIZE	FSCM NO.	DWG. NO.	REV.
B	43321	DCP110C6-48S	A
SCALE: 1:4		CAD FILE: DCP110C6-48S.SLDDRW	SHEET 1 OF 1

