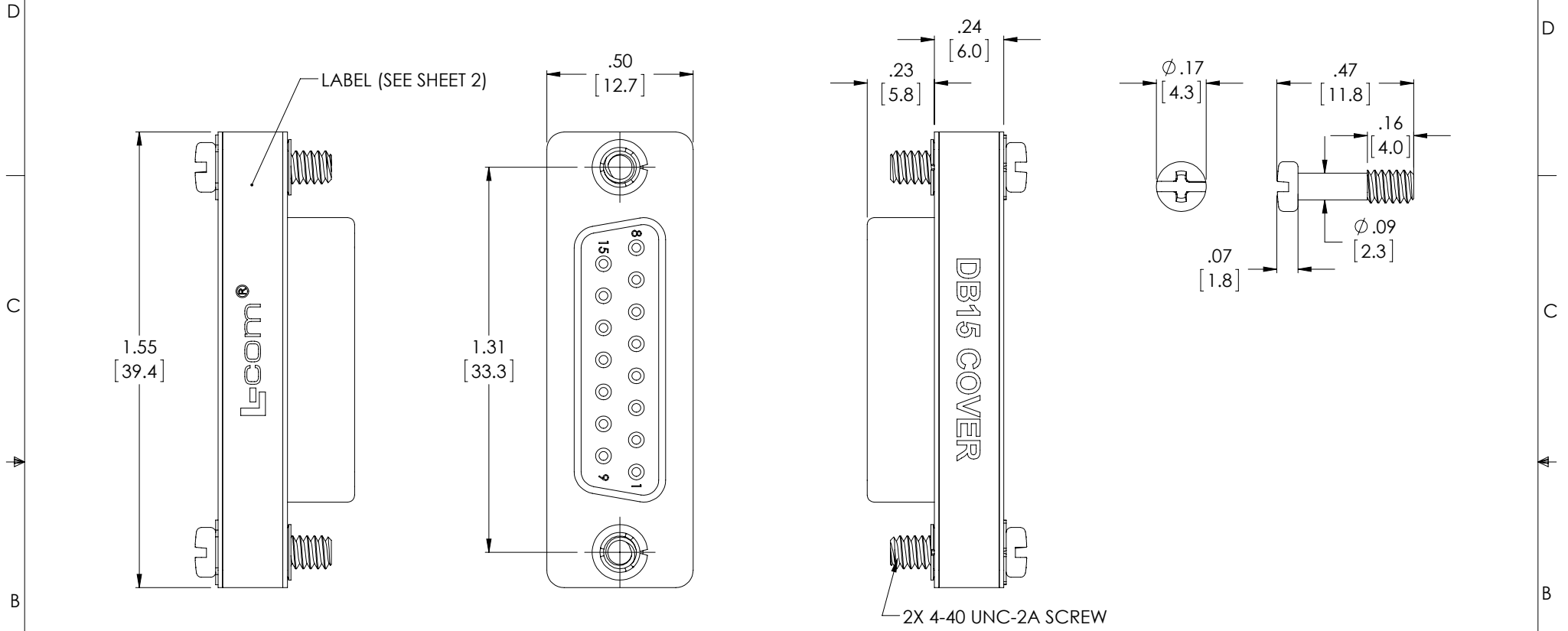


THE INFORMATION CONTAINED IN THIS DRAWING IS THE SOLE PROPERTY OF L-COM, INC. ANY REPRODUCTION IN PART OR WHOLE WITHOUT THE WRITTEN PERMISSION OF L-COM, INC. IS PROHIBITED.

REVISIONS			
REV	DESCRIPTION	DATE	APPROVED
A	INITIAL RELEASE	10/28/13	D.GRIFFIN



NOTES:

MATERIALS:

SHELL: NICKEL PLATED, COLD ROLLED STEEL
 COVER: NICKEL PLATED, COLD ROLLED STEEL
 INSULATOR: PBT GLASS FIBER REINFORCED UL94-V0, BLACK

APPLICATION:

COVER FITS STANDARD 15-CONTACT MALE D-SUBMINIATURE PLUG.

MISCELLANEOUS:

COMPONENT SHALL BE INDIVIDUALLY PACKAGED IN ACCORDANCE WITH L-COM SPECIFICATION PS-0031.

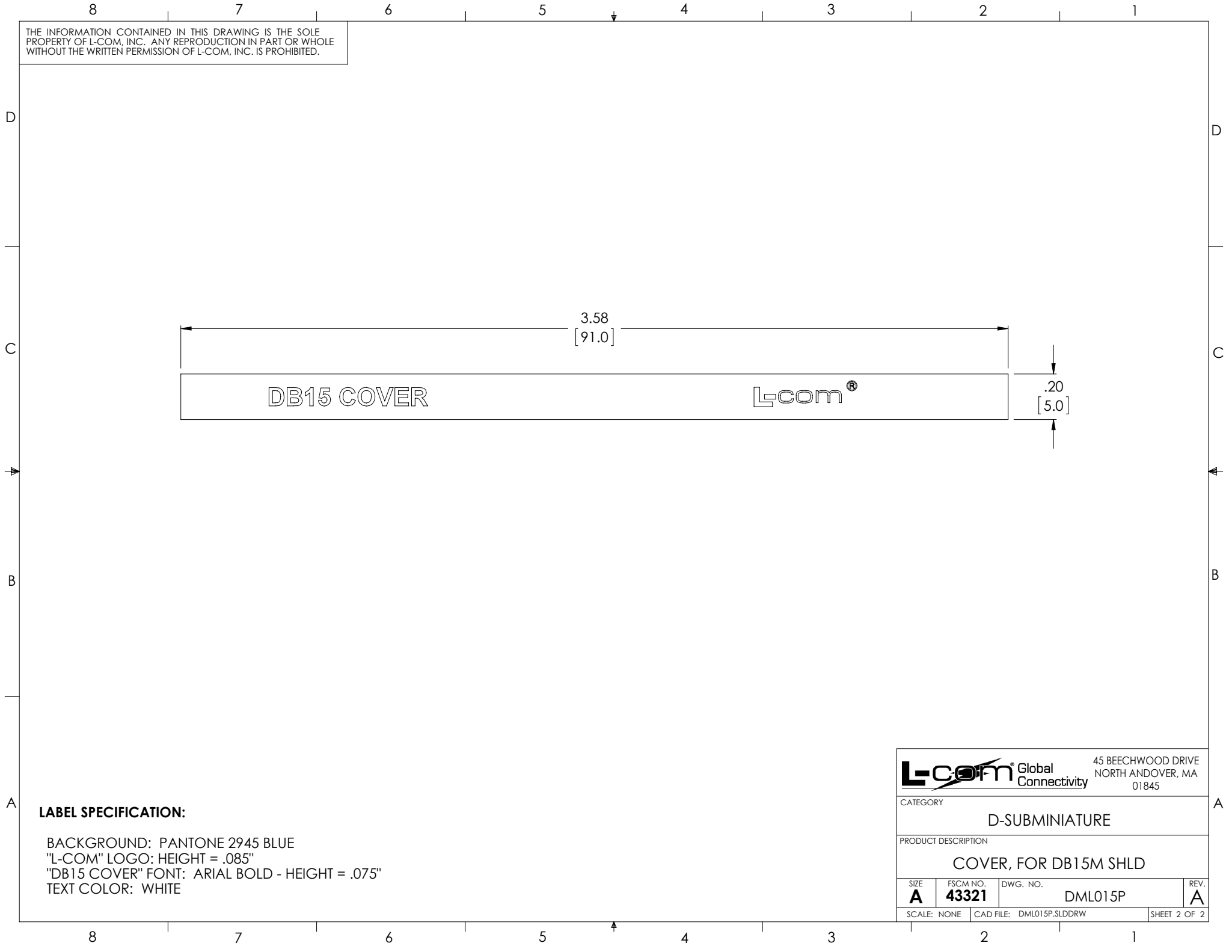
ALL DIMENSIONS ARE FOR REFERENCE ONLY.

REGULATORY COMPLIANCE:

CE2011/65/EU (RoHS DIRECTIVE)

UNLESS OTHERWISE SPECIFIED, DIMENSIONS ARE IN INCHES [mm] OVERALL CABLE LENGTH TOLERANCE: ≤12 [305] = +1 [25] / -0 >12 [305] ≤60 [1524] = +2 [51] / -0 >60 [1524] ≤120 [3048] = +4 [102] / -0 >120 [3048] ≤300 [7620] = +6 [152] / -0 >300 [7620] = +5% / -0%	APPROVALS	DATE		45 BEECHWOOD DRIVE NORTH ANDOVER, MA 01845		
	DRAWN BY D. DESJARDIN	8/29/13				
ALL OTHER DIMENSIONAL TOLERANCES: .X = ± .2 [5.08] .XX = ± .02 [5.1] .XXX = ± .005 [1.3]	CHECKED BY D. PARHAM	8/29/13	CATEGORY D-SUBMINIATURE			
	APPROVED BY S. SMITH	10/28/13	PRODUCT DESCRIPTION COVER, FOR DB15M SHLD			
PROJECTION 	CONFIGURATION DETAILS OF UNDIMENSIONED FEATURES MAY VARY	COLOR VARIATIONS MAY OCCUR	SIZE A	FSCM NO. 43321	DWG. NO. DML015P	REV. A
			SCALE: NONE	CAD FILE: DML015P.SLDDRW	SHEET 1 OF 2	

THE INFORMATION CONTAINED IN THIS DRAWING IS THE SOLE PROPERTY OF L-COM, INC. ANY REPRODUCTION IN PART OR WHOLE WITHOUT THE WRITTEN PERMISSION OF L-COM, INC. IS PROHIBITED.



LABEL SPECIFICATION:

BACKGROUND: PANTONE 2945 BLUE
"L-COM" LOGO: HEIGHT = .085"
"DB15 COVER" FONT: ARIAL BOLD - HEIGHT = .075"
TEXT COLOR: WHITE

		45 BEECHWOOD DRIVE NORTH ANDOVER, MA 01845	
CATEGORY			
D-SUBMINIATURE			
PRODUCT DESCRIPTION			
COVER, FOR DB15M SHLD			
SIZE A	FSCM NO. 43321	DWG. NO. DML015P	REV. A
SCALE: NONE		CAD FILE: DML015P.SLDDRW	SHEET 2 OF 2