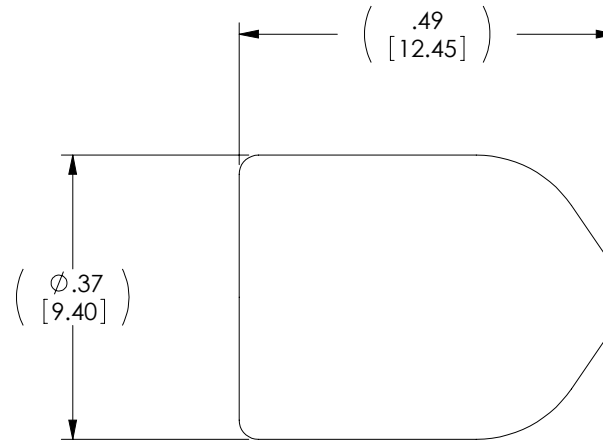
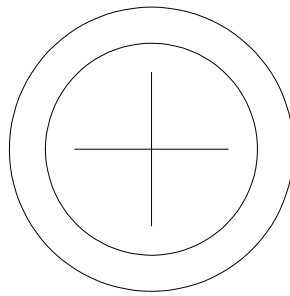


THE INFORMATION CONTAINED IN THIS DRAWING IS THE SOLE PROPERTY OF L-COM, INC. ANY REPRODUCTION IN PART OR WHOLE WITHOUT THE WRITTEN PERMISSION OF L-COM, INC. IS PROHIBITED.

REVISIONS			
REV	DESCRIPTION	DATE	APPROVED
A	INITIAL RELEASE	8/12/11	D.GRIFFIN



**NOTES:**

1. MATERIAL: BLACK RUBBER
2. COMPONENT SHALL BE PACKAGED 10 PER BAG IN ACCORDANCE WITH L-COM SPEC. PS-0031

UNLESS OTHERWISE SPECIFIED, DIMENSIONS ARE IN INCHES [mm] OVERALL CABLE LENGTH TOLERANCE: ≤12 [305] = +1 [25] / -0 >12 [305] ≤60 [1524] = +2 [51] / -0 >60 [1524] ≤120 [3048] = +4 [102] / -0 >120 [3048] ≤300 [7620] = +6 [152] / -0 >300 [7620] = +3% / -0% ALL OTHER DIMENSIONAL TOLERANCES: .X = ± .2 .XX = ± .02 .XXX = ±.005	APPROVALS DRAWN BY D. CASTRO	DATE 8/12/11	45 BEECHWOOD DRIVE NORTH ANDOVER, MA 01845
	CHECKED BY D. PARHAM APPROVED BY D. PARHAM	8/12/11 8/12/11	
PROJECTION 	CONFIGURATION DETAILS OF UNDIMENSIONED FEATURES MAY VARY	PRODUCT DESCRIPTION <b>DUST CAP FIBER FC COUPLER</b>	SIZE <b>A</b> FSCM NO. <b>43321</b> DWG. NO. <b>DSTCP-FC</b> REV. <b>A</b>
COLOR VARIATIONS MAY OCCUR		SCALE: NONE    CAD FILE: DSTCP-FC.SLDDRW    SHEET 1 OF 1	