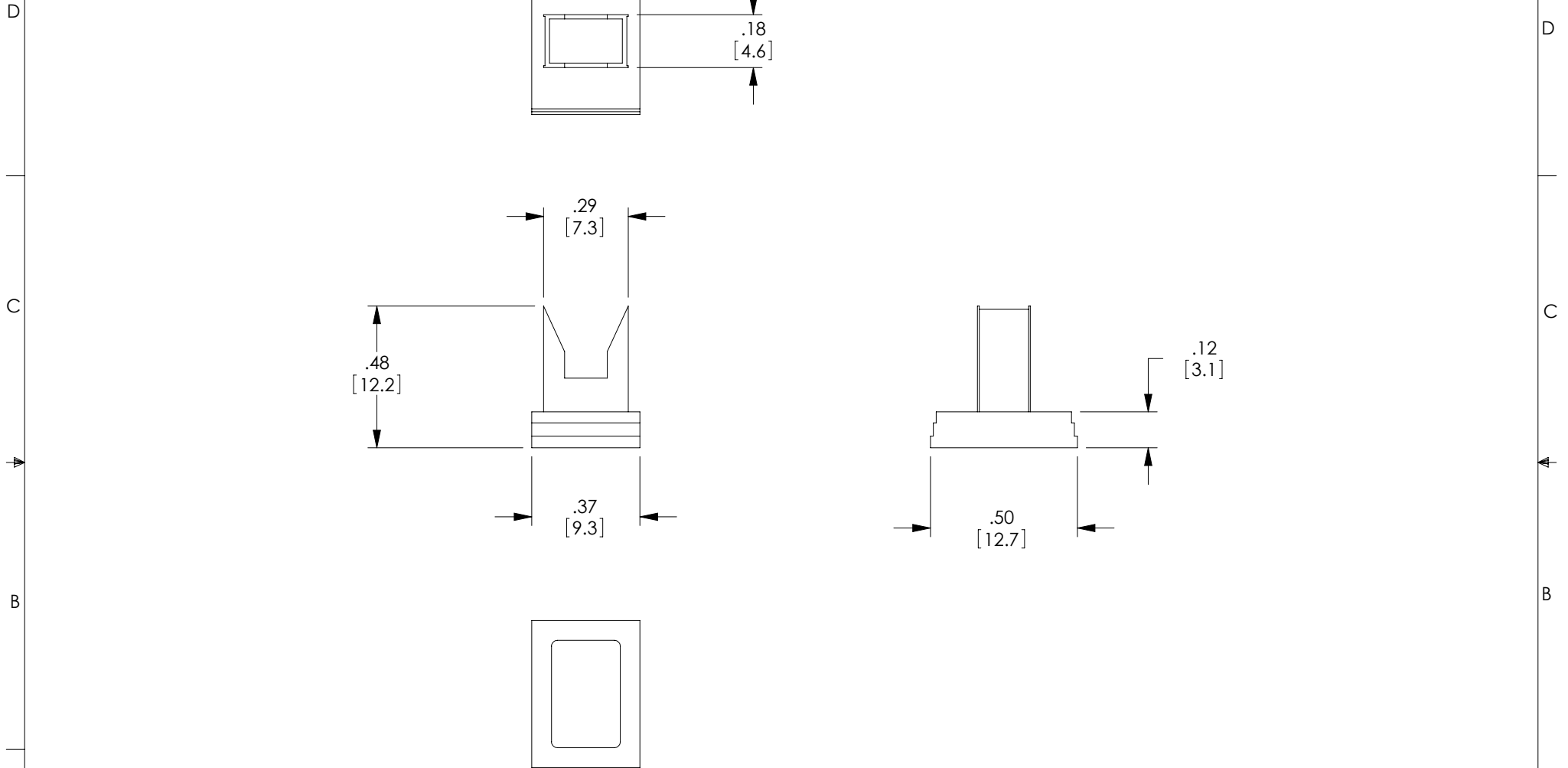


THE INFORMATION CONTAINED IN THIS DRAWING IS THE SOLE PROPERTY OF L-COM, INC. ANY REPRODUCTION IN PART OR WHOLE WITHOUT THE WRITTEN PERMISSION OF L-COM, INC. IS PROHIBITED.

REVISIONS			
REV	DESCRIPTION	DATE	APPROVED
A	INITIAL RELEASE	8/19/11	D.GRIFFIN



NOTES:

ALL DIMENSIONS ARE FOR REFERENCE ONLY.

MATERIAL: BLACK THERMOPLASTIC

COMPONENT SHALL BE PACKAGED IN QUANTITY OF 10 PER BAG IN ACCORDANCE WITH L-COM SPECIFICATION PS-0031.

RoHS Compliant ✓

UNLESS OTHERWISE SPECIFIED, DIMENSIONS ARE IN INCHES [mm] OVERALL CABLE LENGTH TOLERANCE: ≤12 [305] = +1 [25] / -0 >12 [305] ≤60 [1524] = +2 [51] / -0 >60 [1524] ≤120 [3048] = +4 [102] / -0 >120 [3048] ≤300 [7620] = +6 [152] / -0 >300 [7620] = +3% / -0% ALL OTHER DIMENSIONAL TOLERANCES: .X = ±.2 .XX = ±.02 .XXX = ±.005	APPROVALS DRAWN BY D.FRISIELLO	DATE 8/16/11		45 BEECHWOOD DRIVE NORTH ANDOVER, MA 01845
	CHECKED BY J.RUST	8/16/11		CATEGORY FIBER OPTICS
PROJECTION 	CONFIGURATION DETAILS OF UNDIMENSIONED FEATURES MAY VARY	APPROVED BY D.GALLAGHER	8/16/11	PRODUCT DESCRIPTION DUST CAP MTRJ
COLOR VARIATIONS MAY OCCUR	SIZE A	FSCM NO. 43321	DWG. NO. DSTCP-MTRJ	REV. A
SCALE: NONE		CAD FILE: DSTCP-MTRJ.SLDDRW		SHEET 1 OF 1