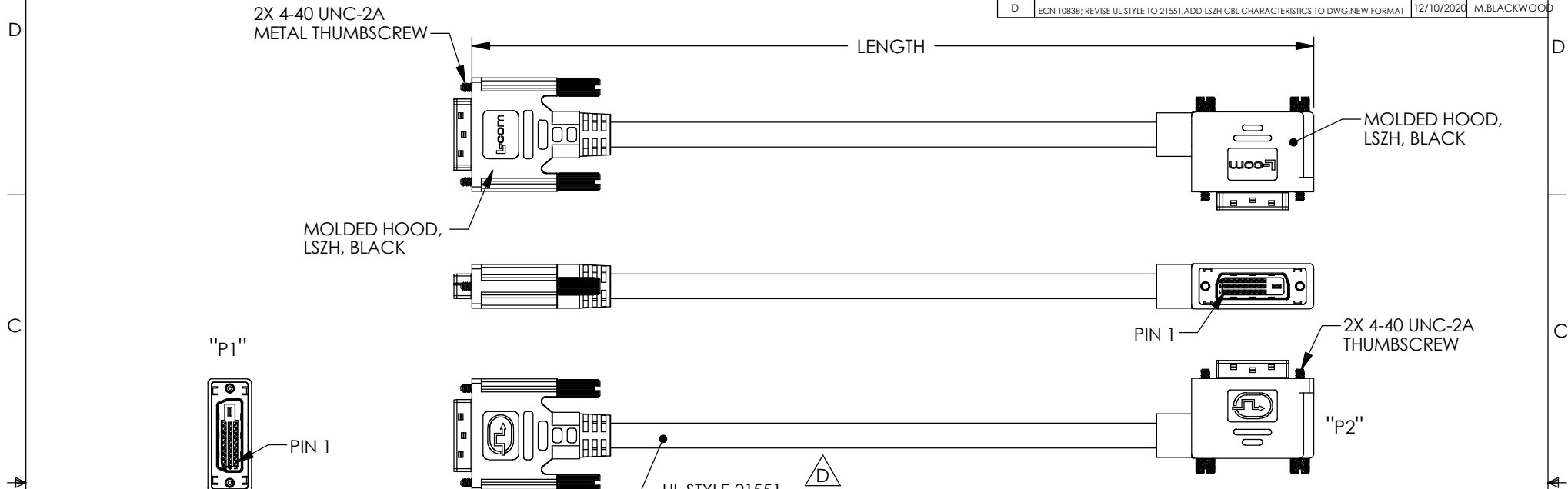
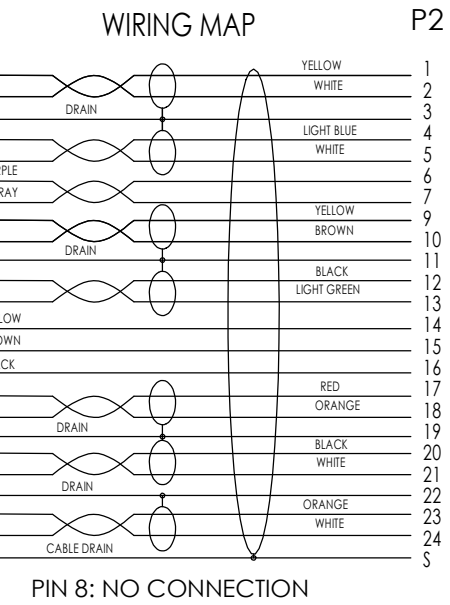
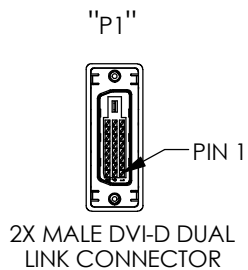


THE INFORMATION CONTAINED IN THIS DRAWING IS THE SOLE PROPERTY OF L-COM, INC. ANY REPRODUCTION IN PART OR WHOLE WITHOUT THE WRITTEN PERMISSION OF L-COM, INC. IS PROHIBITED.

REVISIONS			
REV	DESCRIPTION	DATE	APPROVED
A	INITIAL RELEASE	4/23/13	D.GRIFFIN
B	ECN 6873: UL21100 WAS UL20276, REVISED ROHS NOTE	6/3/13	D.FRISIELLO
C	ECN8182; UPT DWG FROM MOLDED THUMBSCREW TO METAL THUMBSCREW	11/30/2015	B.ZHANG
D	ECN 10838; REVISE UL STYLE TO 21551, ADD LSZH CBL CHARACTERISTICS TO DWG, NEW FORMAT	12/10/2020	M.BLACKWOOD



UL STYLE 21551,
 (7) SHIELDED TWISTED PAIR, 28AWG, STRANDED TINNED COPPER,
 (1) UNSHIELDED TWISTED PAIR, 28AWG, STRANDED TINNED COPPER,
 (3) CONDUCTORS, 28AWG, STRANDED TINNED COPPER,
 SHIELDING(BRAIDED): TINNED COPPER
 SHIELDING: ALUMINUM/POLYESTER
 OUTER JACKET: LOW SMOKE ZERO HALOGEN, BLACK



NOTES:

1. CABLE ASSEMBLY SHALL BE TESTED FOR CONTINUITY.
2. CABLE ASSEMBLY SHALL BE INDIVIDUALLY PACKAGED IN ACCORDANCE WITH L-COM SPECIFICATION PS-0031.
3. DUST COVERS INSTALLED FOR SHIPPING (NOT SHOWN).

MODEL NUMBER	LENGTH	
	FEET	METERS
DVIDD-RA3Z-1	1.0	.31
DVIDD-RA3Z-3	3.0	.91
DVIDD-RA3Z-5	5.0	1.52
DVIDD-RA3Z-10	10.0	3.05
DVIDD-RA3Z-15	15.0	4.57

LSZH CABLE CHARACTERISTICS:
 FLAME RATING: IEC 60332-1
 CORROSIVE GAS: IEC 60754
 SMOKE EMISSION: IEC 61034

UNLESS OTHERWISE SPECIFIED, DIMENSIONS ARE IN INCHES [mm]

OVERALL CABLE LENGTH TOLERANCE:
 ≤12 [305] = +1 [25] / -0
 >12 [305] ≤60 [1524] = +2 [51] / -0
 >60 [1524] ≤120 [3048] = +4 [102] / -0
 >120 [3048] ≤300 [7620] = +6 [152] / -0
 >300 [7620] = +5% / -0

ALL OTHER DIMENSIONAL TOLERANCES:
 .X = ± .2 [5] | FRACTIONS ± 1/32
 .XX = ± .02 [5] | ANGLES ± 1°
 .XXX = ± .005 [1.3]

THIRD-ANGLE PROJECTION

APPROVALS: DRAWN BY D.FRISIELLO, CHECKED BY R.SCOTT, APPROVED BY S.SMITH, DATE 4/17/13

CONFIGURATION DETAILS OF UNDIMENSIONED FEATURES MAY VARY

COLOR VARIATIONS MAY OCCUR

L-com an INFINITI brand

50 High Street, West Mill, North Andover, MA 01845 USA. Phone: 1.800.341.5266 1.978.682.6936

CATEGORY: AUDIO/VIDEO

PRODUCT DESCRIPTION: CA-DVI DL M/M RA LFT EXIT LSZH

SIZE: A, CAGE CODE: 43321, DWG. NO.: DVIDD-RA3Z, REV. D

SCALE: NONE, CAD FILE: DVIDD-RA3Z.SLDRW, SHEET 1 OF 1