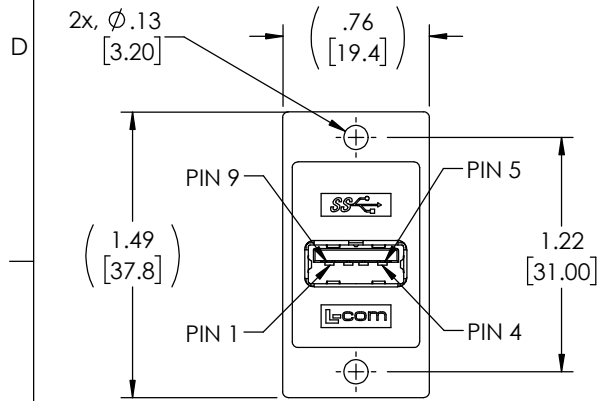
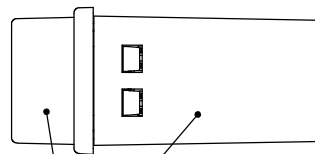
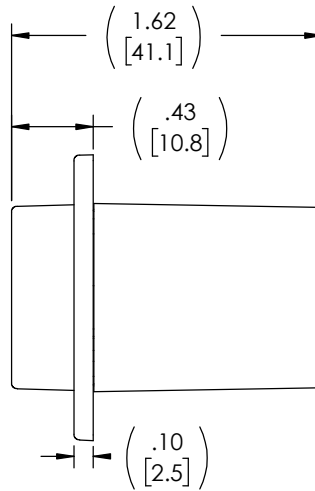


THE INFORMATION CONTAINED IN THIS DRAWING IS THE SOLE PROPERTY OF L-COM, INC. ANY REPRODUCTION IN PART OR WHOLE WITHOUT THE WRITTEN PERMISSION OF L-COM, INC. IS PROHIBITED.

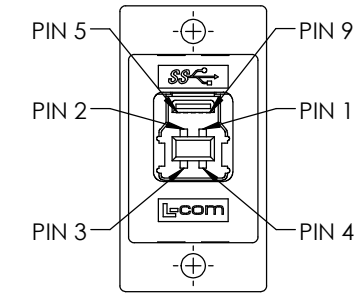
REVISIONS			
REV	DESCRIPTION	DATE	APPROVED
A	INITIAL RELEASE	04/16/2021	D.GUTTADAURO



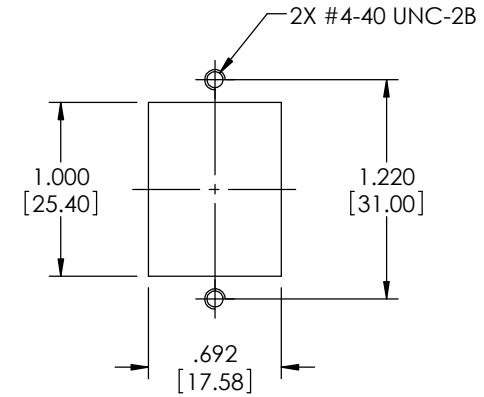
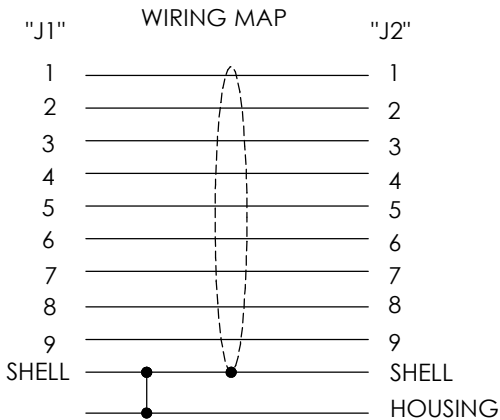
"J1"
 USB 3.0 TYPE "A"
 FEMALE CONNECTOR
 30u" GOLD PLATED CONTACTS
 NICKEL PLATED SHELL



ABS ADAPTER SHIELDED HOUSING,
 FINISH: CHROME



"J2"
 USB 3.0 TYPE "B"
 FEMALE CONNECTOR
 30u" GOLD PLATED CONTACTS
 NICKEL PLATED SHELL



RECOMMENDED
 PANEL CUTOUT

NOTES:

- RATING**
 CURRENT: 1.8A (P1 and P4 CONTACT); 0.25A(OTHER CONTACTS)
 VOLTAGE: 30V max.
 OPERATING TEMPERATURE: -10°C TO +70°C.
- TYPE "B" CONNECTOR MATING FORCE: 40N Max.**
 UN-MATING FORCE: 15N Min.
TYPE "A"CONNECTOR MATING FORCE: 40N Max.
 UN-MATING FORCE: 15N Min.
- COUPLER SHALL BE TESTED FOR CONTINUITY.**
- COUPLER SHALL BE INDIVIDUALLY PACKAGED IN ACCORDANCE WITH L-COM PACKAGING SPEC PS-0031.**

UNLESS OTHERWISE SPECIFIED, DIMENSIONS ARE IN INCHES [mm] OVERALL CABLE LENGTH TOLERANCE: ≤12 [305] = +1 [25] / -0 >12 [305] ≤60 [1524] = +2 [51] / -0 >60 [1524] ≤120 [3048] = +4 [102] / -0 >120 [3048] ≤300 [7620] = +6 [152] / -0 >300 [7620] = +5% / -0 ALL OTHER DIMENSIONAL TOLERANCES: .X = ± .2 [5] FRACTIONS .XX = ± .02 [5] ± 1/32 .XXX = ± .005 [13] ANGLES ± 1° THIRD-ANGLE PROJECTION	APPROVALS DRAWN BY B.ZHANG CHECKED BY D.GUTTADAURO APPROVED BY D.GUTTADAURO	DATE 01/11/2021 01/11/2021 01/11/2021	an INFINITI® brand 50 High Street, West Mill, North Andover, MA 01845 USA. Phone: 1.800.341.5266 1.978.682.6936
	CONFIGURATION DETAILS OF UNDIMENSIONED FEATURES MAY VARY COLOR VARIATIONS MAY OCCUR	CATEGORY USB	PRODUCT DESCRIPTION USB 3.0 ADPT, HI-RETENTION PNL MNT A-F/B-F SHLD
SIZE A	CAGE CODE 43321	DWG. NO. ECF504-30-UABS-HR	REV. A