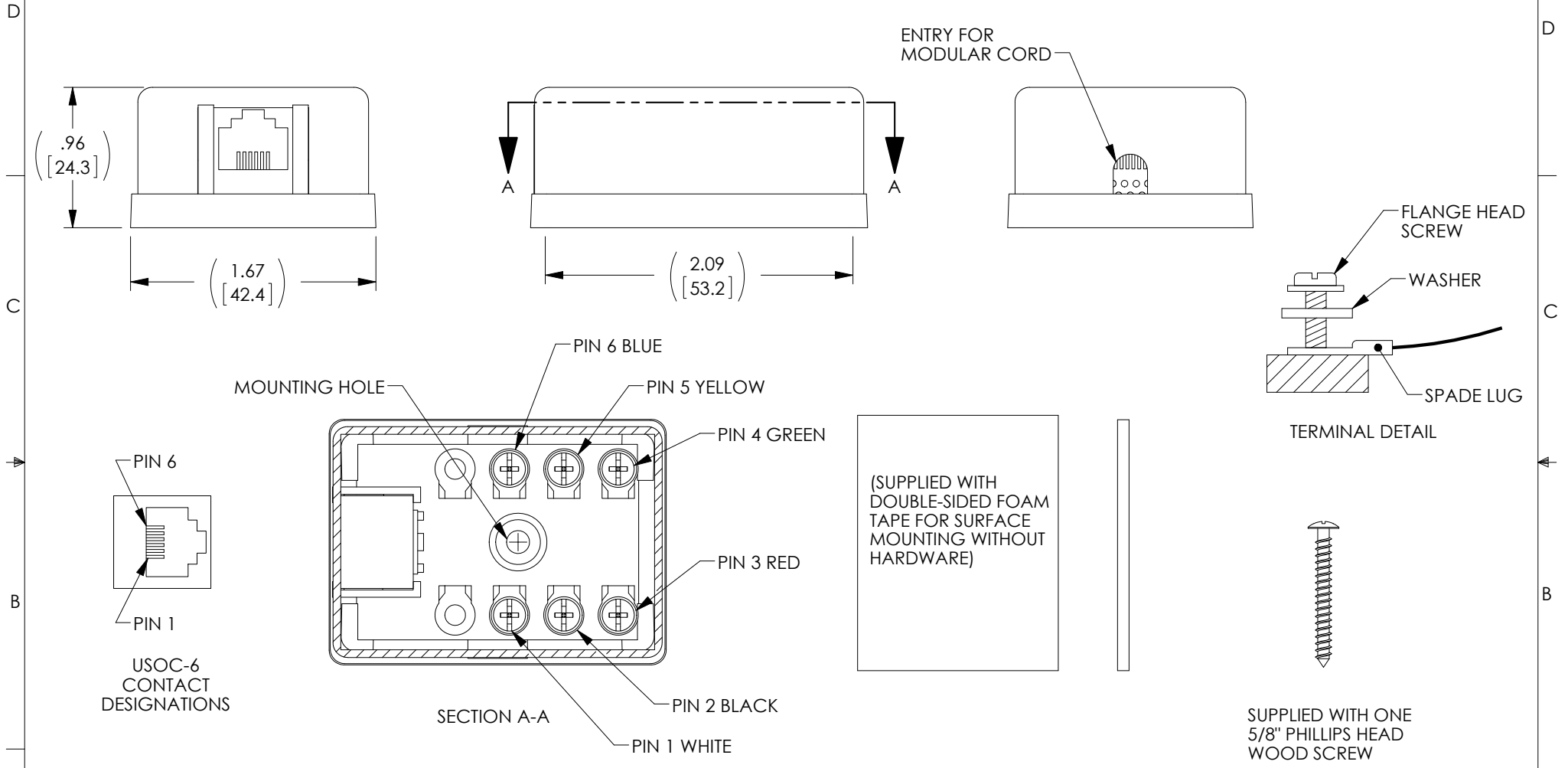


THE INFORMATION CONTAINED IN THIS DRAWING IS THE SOLE PROPERTY OF L-COM, INC. ANY REPRODUCTION IN PART OR WHOLE WITHOUT THE WRITTEN PERMISSION OF L-COM, INC. IS PROHIBITED.

REVISIONS			
REV	DESCRIPTION	DATE	APPROVED
A	INITIAL RELEASE	12/12/12	D.GRIFFIN
B	ECN 6901: REMOVED NOTE 6 (UL LISTED...), 30u TO 15u, REVISE ROHS NOTE	6/14/13	D.FRISIELLO



NOTES:

1. BASE AND COVER ARE HIGH IMPACT THERMOPLASTIC, COLOR: BEIGE.
2. CABLE ENTRY PERMITS REAR ENTRY.
3. COVER SNAPS ON.
4. INTERNAL LEADS HAVE COLOR CODED INSULATION PER USOC 6.
5. JACK CONTACTS HAVE 15μ GOLD PLATING.
6. COMPONENT SHALL BE INDIVIDUALLY PACKAGED IN ACCORDANCE WITH L-COM SPECIFICATION PS-0031.

REGULATORY COMPLIANCE:
ROHS, CE

UNLESS OTHERWISE SPECIFIED, DIMENSIONS ARE IN INCHES [mm] OVERALL CABLE LENGTH TOLERANCE: ≤12 [305] = +1 [25] / -0 >12 [305] ≤60 [1524] = +2 [51] / -0 >60 [1524] ≤120 [3048] = +4 [102] / -0 >120 [3048] ≤300 [7620] = +6 [152] / -0 >300 [7620] = +3% / -0% ALL OTHER DIMENSIONAL TOLERANCES: .X = ±.2 .XX = ±.02 .XXX = ±.005	APPROVALS DRAWN BY D.FRISIELLO CHECKED BY D.GALLAGHER APPROVED BY D.GALLAGHER	DATE 12/12/12 12/12/12 12/12/12	45 BEECHWOOD DRIVE NORTH ANDOVER, MA 01845
	CONFIGURATION DETAILS OF UNDIMENSIONED FEATURES MAY VARY COLOR VARIATIONS MAY OCCUR		
PROJECTION 	SIZE A	FSCM NO. 43321	DWG. NO. TDA306-6C
SCALE: NONE		CAD FILE: TDA306-6C.SLDDRW	REV. B SHEET 1 OF 1