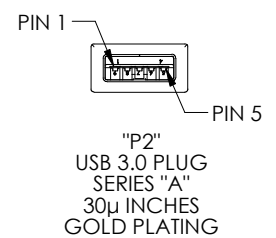
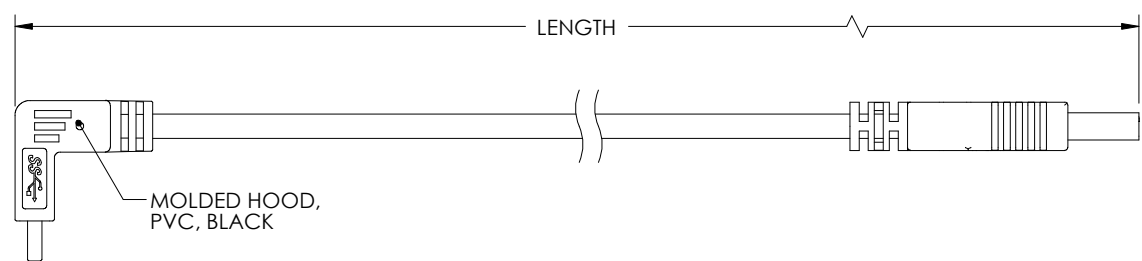
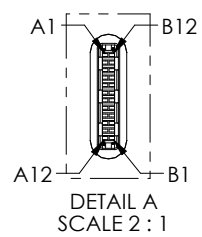
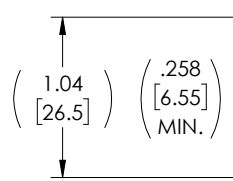


THE INFORMATION CONTAINED IN THIS DRAWING IS THE SOLE PROPERTY OF L-COM, INC. ANY REPRODUCTION IN PART OR WHOLE WITHOUT THE WRITTEN PERMISSION OF L-COM, INC. IS PROHIBITED.

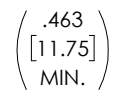
REVISIONS			
REV	DESCRIPTION	DATE	APPROVED
A	REV A DRAWING RELEASED	03/06/18	JLABOY



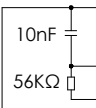
"P1"
USB 3.0 PLUG
SERIES "C"
UP/DOWN EXIT
30μ INCHES
GOLD PLATING



MOLDED HOOD,
PVC, BLACK
L-COM LOGO
ON OTHER SIDE



WIRE MAP					
"P1"	SIGNAL NAME	CONDUCTOR	"P2"	SIGNAL NAME	COLOR
A1,B1,A12,B12	GND	INDV.	4	GND	BLACK
A4,B4,A9,B9	VBUS	SHIELDED PAIR DRAIN 1, DRAIN 2	7	GND_DRAIN	N/A
A5	CC	INDV.	1	Vbus	RED
B5	VCONN			N/C	
A6	Dp1	UNSHIELDED PAIR	3	D+	GREEN
A7	Dn1	UNSHIELDED PAIR	2	D-	WHITE
A2	SSTXp1	SHIELDED PAIR 1	6	StdA_SSRX+	YELLOW
A3	SSTXn1	SHIELDED PAIR 1	5	StdA_SSRX-	BLUE
B11	SSRXp1	SHIELDED PAIR 2	9	StdA_SSTX+	ORANGE
B10	SSRXn1	SHIELDED PAIR 2	8	StdA_SSTX-	PURPLE
SHELL	SHIELD	BRAID	SHELL	SHIELD	N/A



UL STYLE 2725,
(1) 32AWG STRANDED TINNED COPPER TWISTED PAIR
(2) 32AWG SHIELDED STRANDED TINNED COPPER TWISTED PAIR WITH DRAIN WIRE
(2) 26AWG STRANDED TINNED COPPER CONDUCTORS
OVERALL ALUMINUM/POLYESTER SHIELD PLUS TINNED COPPER BRAID SHIELD
JACKET: PVC, BLACK (NOM DIA. .165" [4.2])

PART NUMBER	LENGTH METERS [FEET]
U3A00077-03M	0.3 [.98]
U3A00077-05M	0.5 [1.64]
U3A00077-1M	1.0 [3.28]

- NOTES:**
- CABLE ASSEMBLY SHALL HAVE 360° SHIELD TERMINATION.
 - CABLE ASSEMBLY SHALL BE TESTED FOR CONTINUITY.
 - L-COM LOGO AND USB ICON MAY BE ON ANY SIDE OF THE OVERMOLD FOR USB SERIES "C" END.
 - CABLE ASSEMBLY SHALL BE INDIVIDUALLY PACKAGED IN ACCORDANCE WITH L-COM SPECIFICATION PS-0031.

REGULATORY COMPLIANCE:
CE2011/65/EU(RoHS DIRECTIVE)

UNLESS OTHERWISE SPECIFIED, DIMENSIONS ARE IN INCHES [mm] OVERALL CABLE LENGTH TOLERANCE: ≤12 [305] = +1 [25] / -0 >12 [305] ≤60 [1524] = +2 [51] / -0 >60 [1524] ≤120 [3048] = +4 [102] / -0 >120 [3048] ≤300 [7620] = +6 [152] / -0 >300 [7620] = +3% / -0%	APPROVALS	DATE		50 HIGH STREET NORTH ANDOVER, MA 01845
	DRAWN BY S.LI	11/13/17		
ALL OTHER DIMENSIONAL TOLERANCES: .X = ± .2 [5.08] .XX = ± .02 [1.51] .XXX = ± .005 [1.13]	CHECKED BY B.ZHANG	11/13/17	CATEGORY	USB
	APPROVED BY S.PAN	11/13/17		
PROJECTION	CONFIGURATION DETAILS OF UNDIMENSIONED FEATURES MAY VARY	PRODUCT DESCRIPTION	CA, USB 3.0 TYPE C UP/DOWN EXIT TO STR. A	
	COLOR VARIATIONS MAY OCCUR	SIZE A	FSCM NO. 43321	DWG. NO. U3A00077
		SCALE: NONE	CAD FILE: U3A00077.SLDDRW	SHEET 1 OF 1