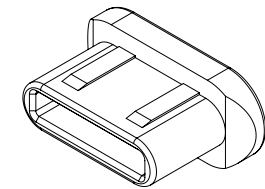
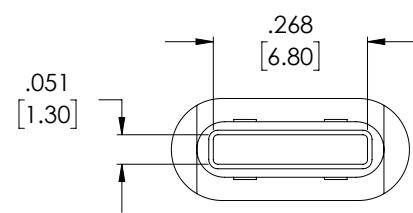
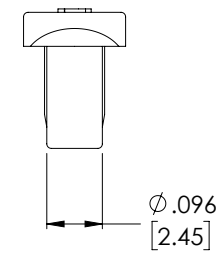
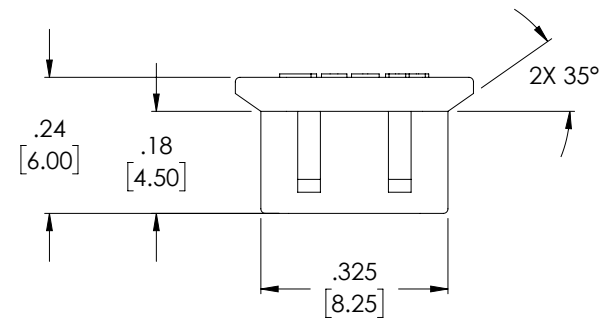
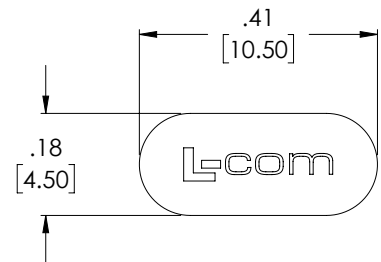


THE INFORMATION CONTAINED IN THIS DRAWING IS THE SOLE PROPERTY OF L-COM, INC. ANY REPRODUCTION IN PART OR WHOLE WITHOUT THE WRITTEN PERMISSION OF L-COM, INC. IS PROHIBITED.

REVISIONS			
REV	DESCRIPTION	DATE	APPROVED
A	REV A DRAWING RELEASED	11/07/2018	SLI



NOTES:

MATERIAL: ABS, BLACK

MISCELLANEOUS:

PACKAGE 10 PIECES PER APPROPRIATELY SIZED BAG.

REGULATORY COMPLIANCE:

CE2011/65/EU (RoHS DIRECTIVE)

UNLESS OTHERWISE SPECIFIED, DIMENSIONS ARE IN INCHES [mm] DIMENSIONAL TOLERANCES: .X = ±.1 [2.54] .XX = ±.01 [2.25] .XXX = ±.005 [1.13] ANGULAR TOLERANCES: ALL = ± 1°	APPROVALS	DATE		50 HIGH STREET NORTH ANDOVER, MA 01845	
	DRAWN BY SLI	07/11/2018			
	CHECKED BY BZHANG	07/11/2018	CATEGORY USB		
	APPROVED BY BGATES	07/11/2018	PRODUCT DESCRIPTION FEMALE TYPE C DUST CAP		
PROJECTION 	COLOR VARIATIONS MAY OCCUR	SIZE A	FSCM NO. 43321	DWG. NO. U3100001	REV. A
		SCALE: NONE	CAD FILE: U3100001.SLDDRW		SHEET 1 OF 1