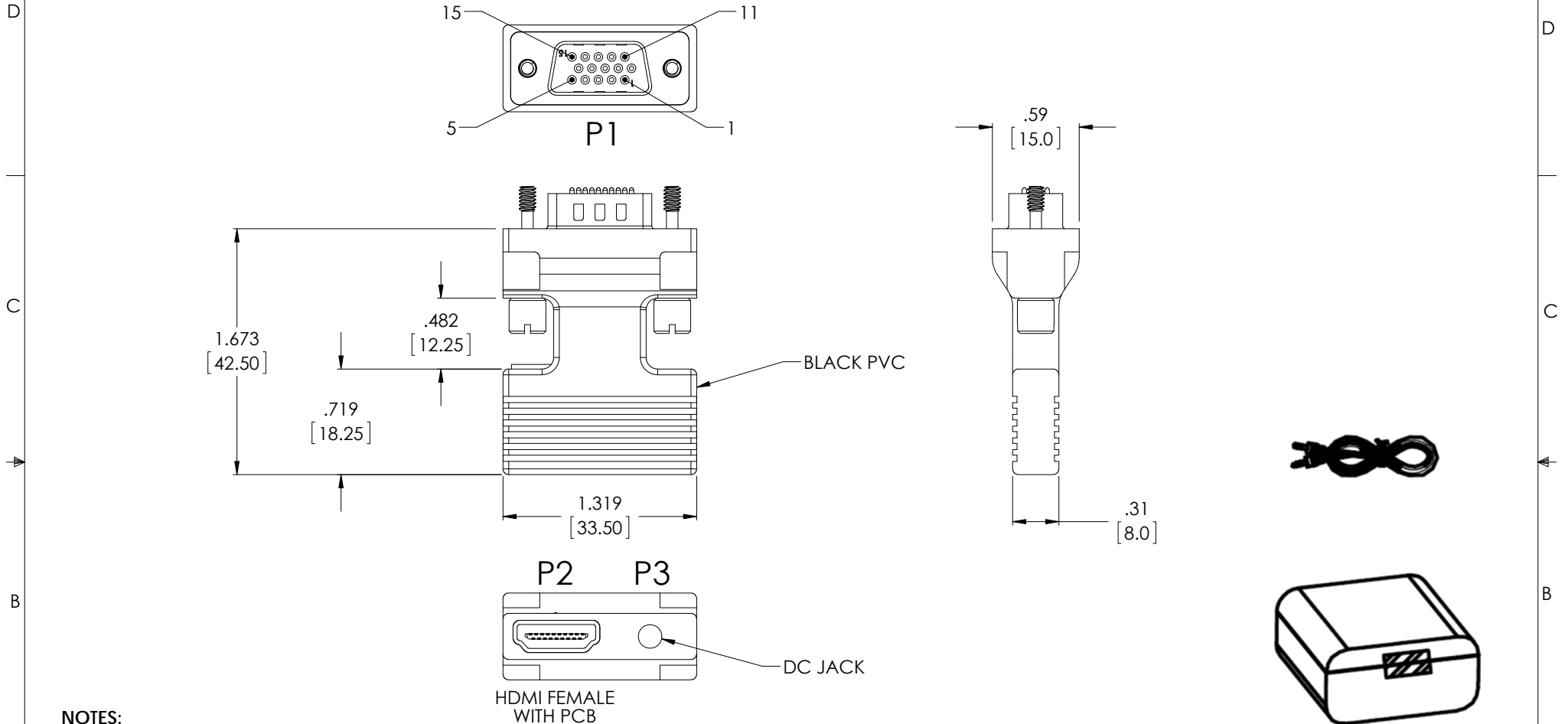


THE INFORMATION CONTAINED IN THIS DRAWING IS THE SOLE PROPERTY OF L-COM, INC. ANY REPRODUCTION IN PART OR WHOLE WITHOUT THE WRITTEN PERMISSION OF L-COM, INC. IS PROHIBITED.

REVISIONS			
REV	DESCRIPTION	DATE	APPROVED
A	INITIAL RELEASE	6/13/17	R.CLARK



**NOTES:**

**ELECTRICAL PROPERTIES:**

1. CABLE ASSEMBLY SHALL BE TESTED FOR CONTINUITY
2. VOLTAGE TEST: DC 300V 10ms  
INSULATION RESISTANCE: 10.0M ohm/min  
CONDUCTANCE RESISTANCE: 2.0 ohm/max

**MISCELLANEOUS:**

1. ALL DIMENSIONS ARE FOR REFERENCE ONLY AND ARE "mm" EXCEPT WHERE SPECIFIED.
2. CABLE ASSEMBLY SHALL BE INDIVIDUALLY PACKAGED IN ACCORDANCE WITH L-COM SPECIFICATION PS-0031.

**REGULATORY COMPLIANCE:**

CE 2011/65/EU(RoHS DIRECTIVE)

UNLESS OTHERWISE SPECIFIED, DIMENSIONS ARE IN INCHES [mm] OVERALL CABLE LENGTH TOLERANCE: ≤12 [305] = +1 [25] / -0 >12 [305] ≤60 [1524] = +2 [51] / -0 >60 [1524] ≤120 [3048] = +4 [102] / -0 >120 [3048] ≤300 [7620] = +6 [152] / -0 >300 [7620] = +5% / -0%	APPROVALS	DATE		50 HIGH STREET NORTH ANDOVER, MA 01845
	DRAWN BY R.CLARK	6/13/17		CATEGORY
ALL OTHER DIMENSIONAL TOLERANCES: .X = ± .2 [5.08] .XX = ± .02 [1.51] .XXX = ± .005 [1.13]	CHECKED BY B.GATES	6/14/17	PRODUCT DESCRIPTION <b>HDMI F TO VGA M ADAPTOR</b>	SCALE: NONE   CAD FILE: VHC00020.SLDDRW   SHEET 1 OF 1
	APPROVED BY B.GATES	6/14/17		
PROJECTION 	CONFIGURATION DETAILS OF UNDIMENSIONED FEATURES MAY VARY			
COLOR VARIATIONS MAY OCCUR				