

THE INFORMATION CONTAINED IN THIS DRAWING IS THE SOLE PROPERTY OF L-COM, INC. ANY REPRODUCTION IN PART OR WHOLE WITHOUT THE WRITTEN PERMISSION OF L-COM, INC. IS PROHIBITED.

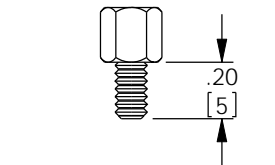
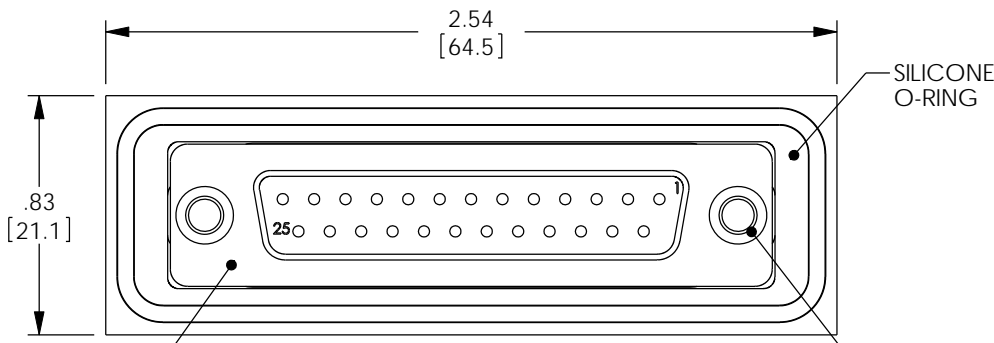
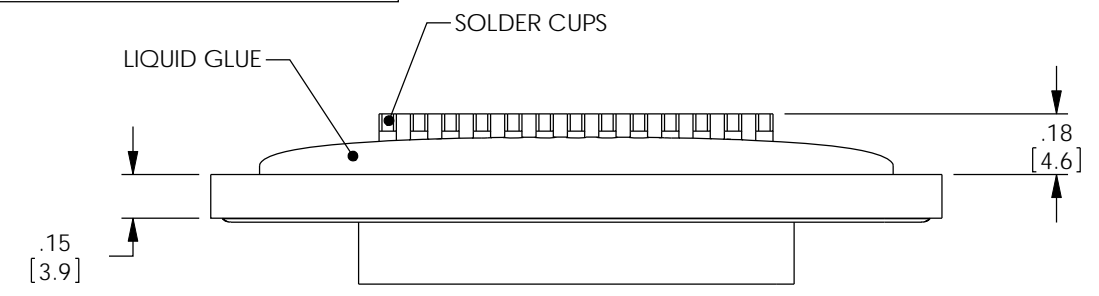
REVISIONS			
REV	DESCRIPTION	DATE	APPROVED
A	INITIAL RELEASE	02/05/04	MCCORMICK
B	ECN 4278: ADDED TEMPERATURE RANGE AND PACKAGING	10/1/09	D.FRISIELLO

D

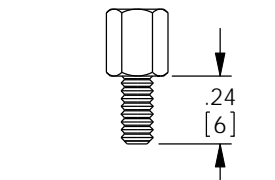
C

B

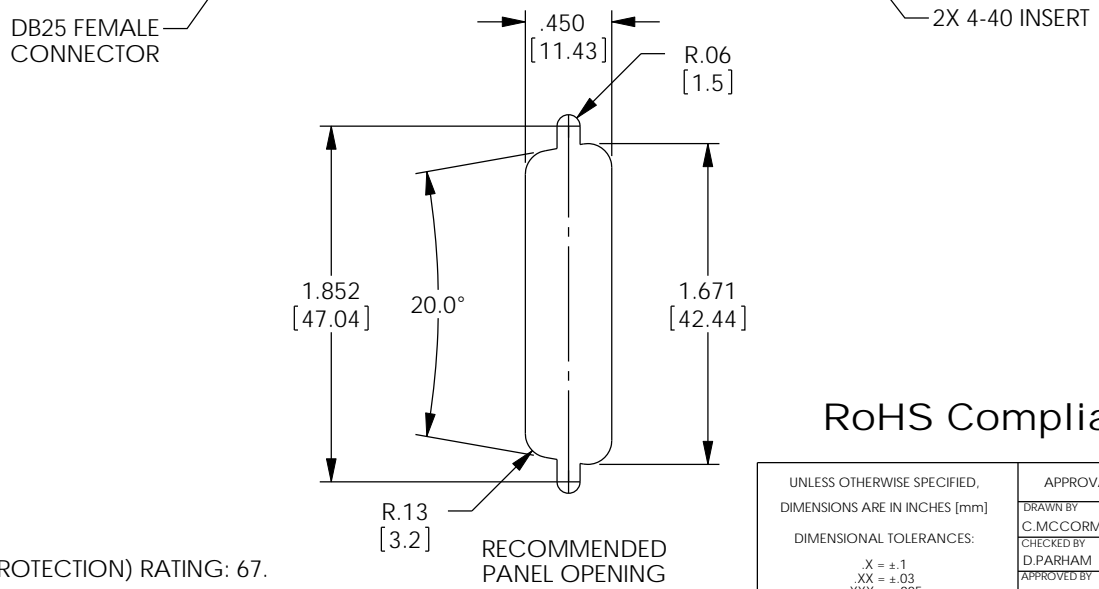
A



4-40 HEX JACK SCREW FOR PANEL THICKNESS UNDER 0.05"



4-40 HEX JACK SCREW FOR PANEL THICKNESS BETWEEN 0.05" AND 0.078"



RoHS Compliant ✓

- NOTES:
1. IP (INGRESS PROTECTION) RATING: 67.
 2. OPERATING TEMPERATURE RANGE: -40°C TO +105°C.
 3. COMPONENT SHALL BE INDIVIDUALLY PACKAGED IN ACCORDANCE WITH L-COM SPECIFICATION PS-0031.

UNLESS OTHERWISE SPECIFIED, DIMENSIONS ARE IN INCHES [mm] DIMENSIONAL TOLERANCES: .X = ±.1 .XX = ±.03 .XXX = ±.005 ANGULAR TOLERANCES: ALL = ± 1° PROJECTION 	APPROVALS DRAWN BY C.MCCORMICK	DATE 02/05/2004		45 BEECHWOOD DRIVE NORTH ANDOVER, MA 01845			
	CHECKED BY D.PARHAM	02/05/2004		CATEGORY DATA CABLING			
	APPROVED BY R.CARRICK	02/05/2004	PRODUCT DESCRIPTION DB25 FEMALE WATERPROOF SOLDER	SIZE A	FSCM NO. 43321	DWG. NO. WPSD25S	REV. B
	CONFIGURATION DETAILS OF UNDIMENSIONED FEATURES MAY VARY		COLOR VARIATIONS MAY OCCUR	SCALE: NONE	CAD FILE: WPSD25S.SLDDRW	SHEET 1 OF 1	