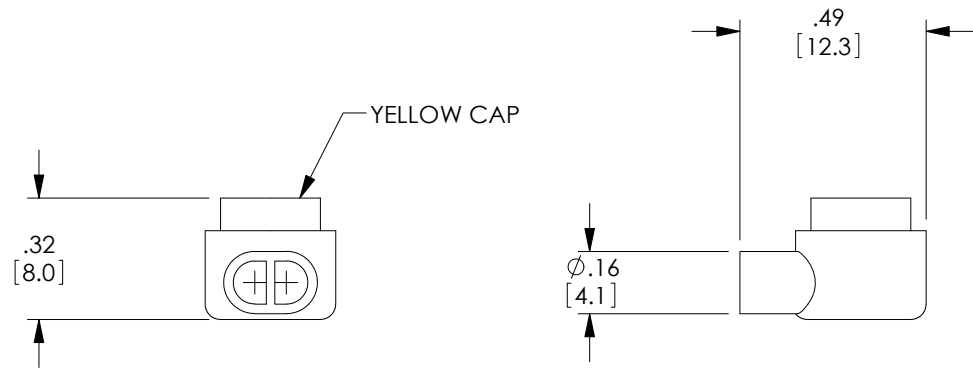
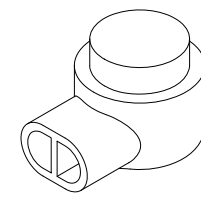
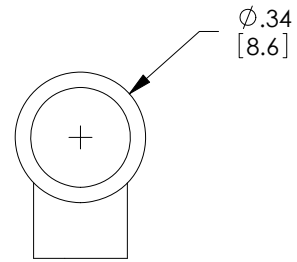


THE INFORMATION CONTAINED IN THIS DRAWING IS THE SOLE PROPERTY OF L-COM, INC. ANY REPRODUCTION IN PART OR WHOLE WITHOUT THE WRITTEN PERMISSION OF L-COM, INC. IS PROHIBITED.

REVISIONS			
REV	DESCRIPTION	DATE	APPROVED
A	INITIAL RELEASE	8/24/11	D.FRISIELLO



RoHS Compliant ✓

NOTES:
 WIRE GAUGE: 19-26 AWG WITH .060 INSULATION DAIMETER MAX.
 ALL DIMENSIONS ARE FOR REFERENCE ONLY.
 COMPONENT SHALL BE PACKAGED IN QAUNTITY OF 100.

UNLESS OTHERWISE SPECIFIED, DIMENSIONS ARE IN INCHES [mm] OVERALL CABLE LENGTH TOLERANCE: ≤12 [305] = +1 [25] / -0 >12 [305] ≤60 [1524] = +2 [51] / -0 >60 [1524] ≤120 [3048] = +4 [102] / -0 >120 [3048] ≤300 [7620] = +6 [152] / -0 >300 [7620] = +3% / -0% ALL OTHER DIMENSIONAL TOLERANCES: .X = ± .2 .XX = ± .02 .XXX = ±.005	APPROVALS D.FRISIELLO	DATE 8/24/11		45 BEECHWOOD DRIVE NORTH ANDOVER, MA 01845	
	CHECKED BY J.RUST	DATE 8/24/11		CATEGORY TELECOM/MODULAR	
PROJECTION 	CONFIGURATION DETAILS OF UNDIMENSIONED FEATURES MAY VARY	PRODUCT DESCRIPTION 2 WIRE BUTT SPLICE - GEL FILLED	SCALE: NONE	CAD FILE: WT-UY.SLDDRW	SHEET 1 OF 1
COLOR VARIATIONS MAY OCCUR	SIZE A	FSCM NO. 43321	DWG. NO. WT-UY	REV. A	