



LSZH CABLE ASSEMBLIES
AVAILABLE FOR SAME-DAY SHIPPING

LSZH Cable Assemblies

L-com manufactures and stocks Low Smoke Zero Halogen (LSZH) cable assemblies for use in confined space environments. Typical applications for LSZH cables include use in aerospace environments, especially sealed aircraft, use in submarines, tanks and other military vehicles as well as any confined space network. LSZH is used to protect valuable communications equipment from corrosive gasses and human lives from toxic smoke in the event of a fire. In addition to thousands of off-the-shelf LSZH cable assemblies, L-com can custom manufacture LSZH cables to your specifications.



Ethernet LSZH Cable Assemblies

- Straight, 45 degree and right angle types
- Shielded and Unshielded Options
- Cat5e, Cat6 and Cat6a 10gig versions available



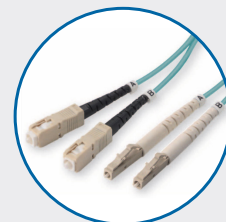
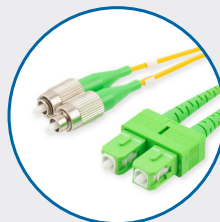
D-Subminiature LSZH Cable Assemblies

- Male to Male and Male to Female Options
- 9, 15 and 25 Pin Options Off-the-Shelf
- Double Shielded Cable



Fiber Optic LSZH Cable Assemblies

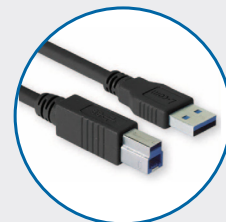
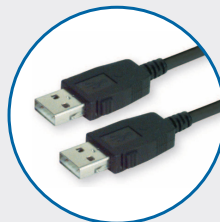
- OM1, OM2, OM3, OM4, OM5, OS1, and OS2
- ST, LC, SC, MPO Connector Styles and More
- 1, 2, 3, 4, 5 and 10 Meter Lengths



USB LSZH Cable Assemblies

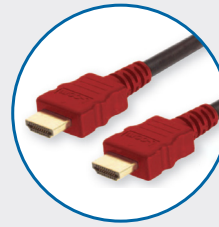
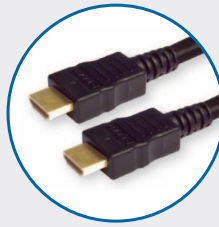


- Standard and Latching Connectors Available
- Shielded and Unshielded Options
- Cat5e and Cat6 Versions Available



HDMI LSZH Cable Assemblies

- 45 Degree and 90 Degree Styles
- Support for HDMI 2.0
- High Speed with Ethernet



DisplayPort LSZH Cables Assemblies

- 0.5, 1, 2, 3, 5, 10 and 15 Meters
- Audio and video support up to DisplayPort 2.0
- Compact Connector Footprint



HD15 SVGA LSZH Cable Assemblies

- Male to Male and Male to Female Versions
- Space Saving Super Thin Cable Design
- Specialized Disconnect Versions Available



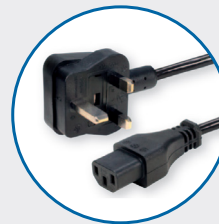
DVI LSZH Cable Assemblies

- Single Link and Dual Link Options
- 45 Degree and 90 Degree Options
- Ferrites Reduce the Effects of EMI/RFI



LSZH IEC Power Cords

- 2 and 3 Meter Lengths (N5-15 to C13) Off-the-Shelf
- 14, 16 and 18 AWG Options(N5-15 to C13)



SATA LSZH Cable Assemblies

- Latching Connectors
- Shielded 26 AWG Cable
- 0.3, 0.5 and 1.0 Meters Off-the-Shelf

